

Clothing Summer 2024
US Edition

The Alpinist way

The pursuit of a raw, no fuss, simple
lightweight approach to both
mountaineering and life.





Seana Forbes
South Ridge Diablon des Dames,
Zinal, Switzerland



ight Buttress

Freja Shannon and Foy Manners
Moonlight Buttress
Zion, USA

Clothing Summer 2024 highlights

Technical Tops & Tees

- NEW** Aiguille Hooded Men's & Women's Top (pg. 13 & 19)
- NEW** Groundup, Redline and Headpoint Men's Tees (pg. 11 – 12)
- NEW** Organic Cotton Men's Graphic Tees (pg. 13 – 14)
- NEW** Nava, Equinox, Groundup, Redline and Headpoint Women's Tees (pg. 16 – 18)
- NEW** Organic Cotton Women's Graphic Tees (pg. 19)

Legwear

- NEW** Anvil Men's & Women's Pants & Shorts (pg. 23 & 30)
- NEW** Dynamo Men's Twin Short (pg. 22)
- NEW** 5 x Women's Legwear styles (pg. 28 – 31)

Soft Shell

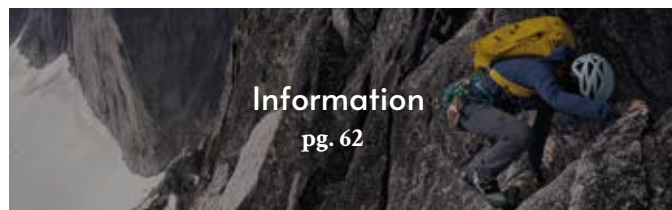
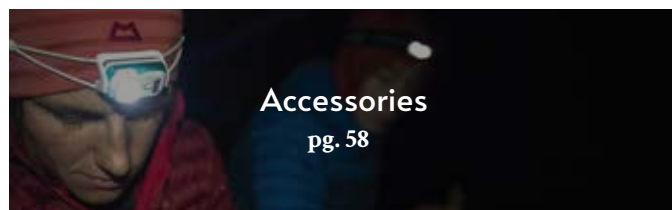
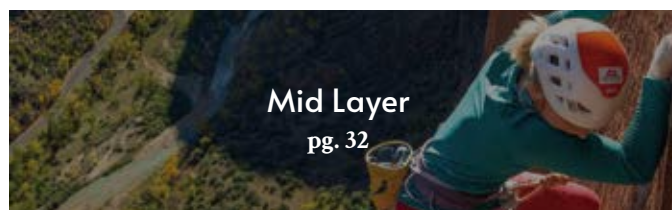
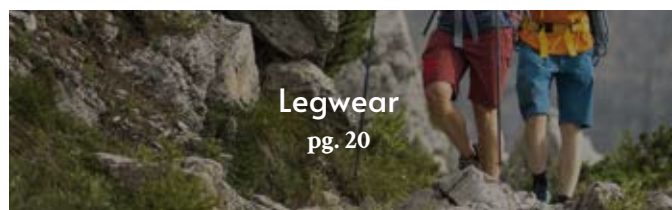
- NEW** Aerotherm Men's & Women's Vests (pg. 41 & 45)
- NEW COLORS** Arrow Men's & Women's range (pg. 40 & 44)

Shell

- NEW** Katam Men's & Women's Jackets (pg. 52 & 56)

Headwear

- NEW COLORS** Yosemite Cap & Roundel Cap (pg. 60)
- NEW** Alpine Cap, El Cap & Aerofoil Cap (pg. 60)



Corporate and social responsibility

We are committed to reducing our impact on the environment, to identify and cut our carbon emissions, and to enhance our corporate and social responsibility in all areas of our business.

Within this document we have clearly indicated any activities and initiatives that relate to specific products that meet our corporate and social responsibility (CSR) criteria, represented with icons at the top of each product listing, as per the key below.



Fair Wear On-Site Inspection

Mountain Equipment actively monitors more than 90% of its production facilities. We define an individual product as having been manufactured in a Fair Wear audited facility when it comes from a factory proven to have had an on-site inspection / audit conducted within the past 3 years.*



DOWN CYCLE® Recycled Down

Starting in 2017 we have aimed to close the loop, creating a community led, down recycling initiative to reduce landfill, decrease water consumption and lower the carbon impact of down. All products carrying the DOWN CYCLE® logo are part of this initiative, with the recycled down guaranteed to be a minimum 700 fill power.



100% Recycled Content

We define a product as 100% recycled when 100% of a product's major fabrics and fill (if applicable) is made from recycled content. Components e.g. zips and minor trim e.g. interlings are excluded.



Recycled Content

We define a product as containing recycled content when at least one of a product's major fabrics and fill (if applicable) contains recycled content. Components e.g. zips and minor trim e.g. interlings are excluded.



Fluorocarbon Free

Our products are defined as being FC-Free when no fluorocarbons have been used in the manufacturing process of the product's major fabrics. Components e.g. zips and minor trim e.g. interlings are excluded. Unfortunately, because FCs are now so widely dispersed in the environment it is impossible to eradicate traces of FCs entirely and some level of contamination cannot be avoided.



Lesser Impact

For a product to carry our 'Lesser Impact' logo the product must be able to demonstrate that it has lowered its overall environmental impact by means other than those specifically listed above. For example, it may use a dyeing method that significantly reduces water and energy consumption. All such claims must be demonstrable through supplier verification and material certification and traceability.



DOWN CODEX® Audited Source

DOWN CODEX® places animal welfare, quality and sustainability at the heart of each one of our down insulated products. First created in 2009, its key aim is to manage and reduce risk in our down supply chain by constantly working to develop our knowledge and best practice, backed up by comprehensive and transparent auditing.



Organic Cotton

For a product to be labelled as using Organic Cotton, 100% of all the cotton used must be from an Organic source. Minor components and trim are excluded.



Extended Sizes

Over recent years, we've steadily increased our size offering, on some of our bestselling core products. Working with retailers, end-consumers, and well-being groups, we want to ensure we are catering for a wide range of body sizes and types to encourage more people to make the most of their time outdoors. Where we use our "Extended Sizes" icon, the products will be available in a smaller and/or larger size set than our standard.

* Please note that all suppliers must agree to the Fair Wear Code of Conduct and must agree to on-site inspections being conducted, at regular intervals. More details on this and our status as a Fair Wear Leader Brand can be found on our website.



Kris McCooy
Beckey-Chouinard, South Howser Tower
Bugaboo, Canada

Technical Tops & Tees



Miška Izakovičová
Callum Johnson and Miška Izakovičová
Scimitar Ridge
Llanberis Pass, North Wales



Nava Men's Crew
NEW COLOR



Nava SS Men's Zip T
NEW COLOR



Nava SS Men's Zip T



Glace Hooded Men's Top



Headpoint Alpinism Men's Tee
NEW



Headpoint Men's Tee



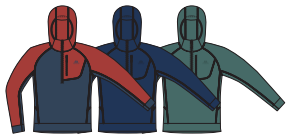
Groundup Men's Tee
NEW



Groundup Skyline Men's Tee
NEW



Redline LS Men's Tee
NEW



Aiguille Hooded Men's Top
NEW



Freedom Men's Tee
NEW



Alpinism Men's Tee
NEW



Roundel Men's Tee
NEW

WOMEN'S



Nava Women's Tank
NEW



Nava SS Women's Zip-T
NEW COLOR



Nava LS Women's Zip-T
NEW COLOR



Glace Hooded Women's Top
NEW COLOR



Headpoint Women's Vest
NEW COLOR



Headpoint Women's Tee
NEW COLOR



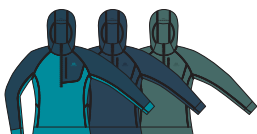
Equinox Women's Vest
NEW



Groundup Stripe Women's Tee
NEW



Redline LS Women's Tee
NEW



Aiguille Hooded Women's Top
NEW



Freedom Women's Tee
NEW



Alpinism Women's Tee
NEW

NEW COLOR



ME-005996

NAVA MEN'S CREW

A light and fast drying short sleeve crew for year round mountain running and hiking.



This lightweight and highly wicking short sleeve crew moves moisture fast whether worn alone for running in the mountains or simply as a performance base layer. HeiQ technology resists odour whilst flatlocked seams sit comfortably under pack straps.



- 125g m² lightweight fabric for exceptional wicking
- HeiQ Fresh odour neutralising technology; direct targeting of odour molecules
- Slim fit
- Flatlocked seams for next-to-skin comfort
- Crew neck

Sizes: S to XXL

Weight: 110g / 3.9oz (approx.)

Fabric: 125g / 3.7oz

Content: 87% Recycled Polyester, 13% Polyester

NEW



ME-01908
Cardinal/Majolica



ME-01680
Mykonos/Majolica



ME-01813 Sage/
Fern

NEW COLOR



ME-005997

NAVA SS MEN'S ZIP-T

A light and fast drying short sleeve Zip-T for running through the longest and hottest mountain days.



This lightweight and highly wicking short sleeve Zip-T is the perfect choice for epic summer days that start at dawn in a bid to outrun the incoming afternoon storm. HeiQ technology resists odour on multi-day trips and a deep centre front zip adds extra ventilation.



- 125g m² lightweight fabric for exceptional wicking
- HeiQ Fresh odour neutralising technology; direct targeting of odour molecules
- Slim fit
- Flatlocked seams for next-to-skin comfort
- YKK® deep centre front zip for ventilation

Sizes: S to XXL

Weight: 120g / 4.2oz (approx.)

Fabric: 125g / 3.7oz

Content: 87% Recycled Polyester, 13% Polyester

NEW



ME-01908
Cardinal/Majolica



ME-01680
Mykonos/Majolica



ME-01813 Sage/
Fern



ME-005998

NAVA LS MEN'S ZIP-T

A light and fast drying long sleeve Zip-T for running jagged skylines and hiking remote valleys.



This versatile, lightweight and highly wicking Zip-T can be worn alone with sleeves pushed up during rapid ascents but is equally suitable as a base layer whilst running through more severe weather. HeiQ technology neutralises odours and a deep centre front zip offers extra ventilation.



- 125g m² lightweight fabric for exceptional wicking
- HeiQ Fresh odour neutralising technology; direct targeting of odour molecules
- Slim fit
- Flatlocked seams for next-to-skin comfort
- YKK® deep centre front zip for ventilation

Sizes: S to XXL

Weight: 160g / 5.6oz (approx.)

Fabric: 125g / 3.7oz

Content: 87% Recycled Polyester, 13% Polyester



ME-01813 Sage/
Fern



ME-01814 Bluefin/
Dusk



ME-01680
Mykonos/Majolica



ME-006023

GLACE HOODED MEN'S TOP

A light and fast drying hooded top for sun baked glacier approaches and south facing granite walls.



With lightweight, highly wicking fabric and a relaxed hood the Glace Hooded Top provides essential sun protection for big rock routes and afternoon descents. Equally at home under other layers during pre-dawn approaches, it's a versatile layer you'll wear all day.



- 125g m² lightweight fabric for exceptional wicking
- HeiQ Fresh odour neutralising technology; direct targeting of odour molecules
- Slim fit
- Flatlocked seams for next-to-skin comfort
- Relaxed fit hood

Sizes: S to XXL

Weight: 180g / 6.3oz (approx.)

Fabric: 125g / 3.7oz

Content: 87% Recycled Polyester, 13% Polyester



ME-01807 Fern

ME-01250 Glacier

ME-01751 Dusk

NEW



ME-007326

HEADPOINT ALPINISM MEN'S TEE

A light, stretchy and fast drying tee for searching out classic routes and long days in the mountains.



With a soft feel and TENCEL™ cellulose fibres this is a tee that balances all day comfort with fast drying technical performance for strenuous mountain days and nerve testing pitches. HeiQ Fresh technology ensures long lasting odour control for sustained use on big trips.



- 175g m² TENCEL™ and recycled polyester fabric; moisture management and comfort
- HeiQ Fresh odour neutralising technology; direct targeting of odour molecules
- TENCEL™ cellulose fibres give outstanding wicking performance
- Slim fit
- Crew neck



Sizes: S to XXL

Weight: 170g / 6oz (approx.)

Fabric: 175g / 5.2oz

Content: 76% Recycled Polyester, 19% Lyocell, 5% Elastane



ME-01899 Admiral Blue

ME-01252 Cardinal Orange

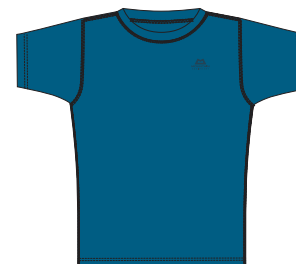
ME-01183 Flint Grey



ME-006617

HEADPOINT MEN'S TEE

A light, stretchy and fast drying tee for searching out classic routes and long days in the mountains.



With a soft feel and TENCEL™ cellulose fibres this is a tee that balances all day comfort with fast drying technical performance for strenuous mountain days and nerve testing pitches. HeiQ Fresh technology ensures long lasting odour control for sustained use on big trips.



- 175g m² TENCEL™ and recycled polyester fabric; moisture management and comfort
- HeiQ Fresh odour neutralising technology; direct targeting of odour molecules
- TENCEL™ cellulose fibres give outstanding wicking performance
- Slim fit
- Crew neck

Sizes: S to XXL

Weight: 170g / 6oz (approx.)

Fabric: 175g / 5.2oz

Content: 76% Recycled Polyester, 19% Lyocell, 5% Elastane



ME-01678 Mykonos Blue

ME-01183 Flint Grey

ME-01596 Medieval Blue

NEW



ME-007390

GROUNDUP MEN'S TEE

A lightweight, stretchy and highly wicking tee that is perfect for hot days on the rock.



Offering a cotton-like feel with technical performance this is a fast drying and stretchy tee. drirelease® fabric wicks moisture efficiently from the skin and Polygiene anti-microbial technology ensures odour control for sustained use on longer trips.



- 175g m² drirelease® and recycled polyester fabric; lightweight moisture management with stretch
- Polygiene StayFresh™ anti-microbial technology; reduces odour and washing requirements
- TENCEL™ cellulose fibres give outstanding wicking performance
- Slim fit
- Crew neck

Sizes: S to XXL

Weight: 160g / 5.6oz (approx.)

Fabric: 175g / 5.2oz (solid), 170g / 5.0oz (stripe)

Content: 82% Recycled Polyester, 11% Lyocell, 7% Elastane (solid) / 85% Recycled Polyester, 8% Lyocell, 7% Elastane (stripe)



ME-01898 Chili Red



ME-01438 Cosmos Stripe



ME-01834 Fern Stripe

NEW



ME-007325

GROUNDUP SKYLINE MEN'S TEE

A lightweight, stretchy and highly wicking tee that is perfect for hot days on the rock.



Offering a cotton-like feel with technical performance this is a fast drying and stretchy tee. drirelease® fabric wicks moisture efficiently from the skin and Polygiene anti-microbial technology ensures odour control for sustained use on longer trips.



- 175g m² drirelease® and recycled polyester fabric; lightweight moisture management with stretch
- Polygiene StayFresh™ anti-microbial technology; reduces odour and washing requirements
- TENCEL™ cellulose fibres give outstanding wicking performance
- Slim fit
- Crew neck



Sizes: S to XXL

Weight: 160g / 5.6oz (approx.)

Fabric: 175g / 5.2oz (solid), 170g / 5.0oz (stripe)

Content: 82% Recycled Polyester, 11% Lyocell, 7% Elastane (solid) / 85% Recycled Polyester, 8% Lyocell, 7% Elastane (stripe)



ME-01635 Majolica Blue



ME-01476 Denim Blue



ME-01807 Fern

NEW



ME-007392

REDLINE LS MEN'S TEE

A lightweight, stretchy and highly wicking long sleeved tee that works for almost any activity in the mountains.



This comfortable long sleeved tee can be worn alone on south facing rock routes or far inside your layers during alpine starts thanks to its fast drying and stretchy drirelease® fabric. Polygiene antimicrobial technology gives long lasting odour control for sustained use.



- 175g m² drirelease® and recycled polyester fabric; lightweight moisture management with stretch
- Polygiene StayFresh™ anti-microbial technology; reduces odour and washing requirements
- TENCEL™ cellulose fibres give outstanding wicking performance
- Slim fit
- Crew neck

Sizes: S to XXL

Weight: 200g / 5.6oz (approx.)

Fabric: 175g / 5.2oz (solid), 170g / 5.0oz (stripe)

Content: 82% Recycled Polyester, 11% Lyocell, 7% Elastane (solid) / 85% Recycled Polyester, 8% Lyocell, 7% Elastane (stripe)



ME-01463 Cosmos stripe/Cosmos



ME-01652 Acidstripe/Denim



ME-01828 Fern Stripe/Fern

TECHNICAL TOPS & TEES

LEGWEAR

MID LAYER

SOFT SHELL

SHELL

ACCESSORIES

INFORMATION

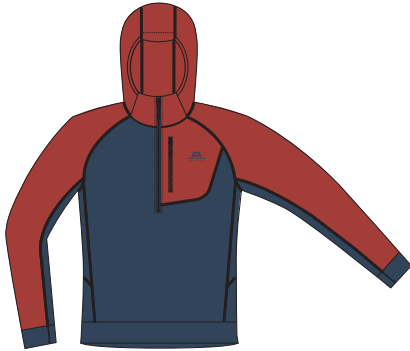
NEW



ME-007145

AIGUILLE HOODED MEN'S TOP

A stretch hooded top for keeping the sun and wind at bay on exposed crags.



An incredibly versatile climbing layer for routes from Pabbay to Patagonia, this is a top you can leave on all day. Durable stretch jersey fabric provides sun protection as well as some wind resistance and the hood and thumb loops help you cover up at belays.

- 175g m² stretch jersey fabric with durable face and soft inner
- Slim fit
- Close fitting hood
- Coverstitched seams throughout for next-to-skin comfort
- YKK® centre front zip for ventilation
- Chest pocket with YKK® zip
- Double layer cuffs with integrated thumb loops

Sizes: S to XXL

Weight: 300g / 10.6oz (approx.)

Fabric: 175g / 5.2oz

Content: 90% Recycled Polyamide, 10% Elastane



ME-01790 Sage

ME-01899 Admiral Blue

ME-01742 Dusk/Red Rock

NEW



ME-007328

FREEDOM MEN'S TEE

Organic cotton tee featuring an exclusive print.



Shared values connect us to other Alpinists. This original mountain inspired linocut print design is handmade by British artist Chris Williams. The graphic is screen-printed on a T-shirt made of 100% pre-washed Organic Cotton.



- 180g m² pre-washed 100% Organic Cotton
- Crew neck
- Exclusive Mountain Equipment graphic



Sizes: S to XXL

Weight: 180g / 6.3oz (approx.)

Fabric: 180g / 5.3oz

Content: 100% Organic Cotton



ME-01476 Denim Blue

ME-01252 Cardinal Orange

ME-01790 Sage

NEW



ME-007327

ALPINISM MEN'S TEE

Organic cotton tee featuring an exclusive print.



Shared values connect us to other Alpinists. This original mountain inspired linocut print design is handmade by British artist Chris Williams. The graphic is screen-printed on a T-shirt made of 100% pre-washed Organic Cotton.



- 180g m² pre-washed 100% Organic Cotton
- Crew neck
- Exclusive Mountain Equipment graphic



Sizes: S to XXL

Weight: 180g / 6.3oz (approx.)

Fabric: 180g / 5.3oz

Content: 100% Organic Cotton



ME-01899 Admiral Blue

ME-01941 Coco

ME-01790 Sage

TECHNICAL TOPS & TEES

LEGWEAR

MID LAYER

SOFT SHELL

SHELL

ACCESSORIES

INFORMATION

NEW



ME-004770

ROUNDEL MEN'S TEE

Organic cotton tee featuring an exclusive print.

TECHNICAL TOPS & TEES

LEGWEAR

MID LAYER

SOFT SHELL

SHELL

ACCESSORIES

INFORMATION



- 180g m² pre-washed 100% Organic Cotton
- Crew neck
- Exclusive Mountain Equipment graphic



Sizes: S to XXL
Weight: 180g / 6.3oz (approx.)
Fabric: 180g / 5.3oz
Content: 100% Organic Cotton



ME-01899 Admiral Blue



ME-01594 Conifer



ME-01476 Denim Blue



Golden Gate, El Cap
Yosemite, USA

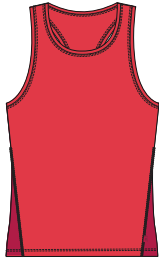
NEW



ME-007142

NAVA WOMEN'S TANK

A light and fast drying tank for running and hiking in the heat.



In the Nava Tank, fast drying and lightweight fabrics are allied to a slim fitting racer back tank design. Perfect for working hard in hot conditions, whether load carrying in to basecamp or flying along a ridgeline.



- 125g m² lightweight fabric for exceptional wicking
- HeiQ Fresh odour neutralising technology; direct targeting of odour molecules
- Slim fit
- Racer back
- Flatlocked seams for next-to-skin comfort

Sizes: 8 to 16

Weight: 80g / 2.8oz (approx.)

Fabric: 125g / 3.7oz

Content: 87% Recycled Polyester, 13% Polyester



ME-01812
Hibiscus/Capsicum



ME-01813 Sage/
Fern



ME-01845 Topaz/
Majolica

NEW COLOR



ME-006653

NAVA SS WOMEN'S ZIP-T

A light and fast drying short sleeve Zip-T for running jagged skylines and hiking remote valleys.



This lightweight and highly wicking short sleeve Zip-T is the perfect choice for epic summer days that start as the sun rises and outrun the incoming afternoon storm. HeiQ technology resists odour on multi-day trips and a deep centre front zip adds extra ventilation.



- 125g m² lightweight fabric for exceptional wicking
- HeiQ Fresh odour neutralising technology; direct targeting of odour molecules
- Slim fit
- Flatlocked seams for next-to-skin comfort
- YKK® deep centre front zip for ventilation

Sizes: 8 to 16

Weight: 100g / 3.5oz (approx.)

Fabric: 125g / 3.7oz

Content: 87% Recycled Polyester, 13% Polyester



ME-01845 Topaz/
Majolica



ME-01825 Jade/
Spruce



ME-01812
Hibiscus/Capsicum

NEW COLOR



ME-006652

NAVA LS WOMEN'S ZIP-T

A light and fast drying long sleeve Zip-T for running through the longest and hottest mountain days.



This versatile, lightweight and highly wicking Zip-T can be worn alone with sleeves pushed up during rapid ascents but is equally suitable as a base layer for early morning starts. HeiQ technology neutralises odours and a deep centre front zip offers extra ventilation.



- 125g m² lightweight fabric for exceptional wicking
- HeiQ Fresh odour neutralising technology; direct targeting of odour molecules
- Slim fit
- Flatlocked seams for next-to-skin comfort
- YKK® deep centre front zip for ventilation

Sizes: 8 to 16

Weight: 130g / 4.6oz (approx.)

Fabric: 125g / 3.7oz

Content: 87% Recycled Polyester, 13% Polyester



ME-01845 Topaz/
Majolica



ME-01825 Jade/
Spruce



ME-01812
Hibiscus/Capsicum

TECHNICAL TOPS & TEES

LEGWEAR

MID LAYER

SOFT SHELL

SHELL

ACCESSORIES

INFORMATION

NEW COLOR



ME-005993

GLACE HOODED WOMEN'S TOP

A light and fast drying hooded top for sun baked glacier approaches and south facing granite walls.



With lightweight, highly wicking fabric and a relaxed hood the Glace Hooded Women's Top provides essential sun protection for big rock routes and afternoon descents. Equally at home under other layers during pre-dawn approaches, it's a versatile layer you'll wear all day.



- 125g m² lightweight fabric for exceptional wicking
- HeiQ Fresh odour neutralising technology; direct targeting of odour molecules
- Slim fit
- Flatlocked seams for next-to-skin comfort
- Relaxed fit hood

Sizes: 8 to 16

Weight: 150g / 5.3oz (approx.)

Fabric: 125g / 3.7oz

Content: 87% Recycled Polyester, 13% Polyester



ME-01852
Mandarin Red

ME-01250 Glacier

ME-01635 Majolica
Blue

NEW COLOR



ME-006628

HEADPOINT WOMEN'S VEST

A light, stretchy and fast drying vest for searching out classic routes and long days in the mountains.



With a soft feel and TENCEL™ cellulose fibres this is a vest that balances all day comfort with fast drying technical performance for strenuous mountain days and nerve testing pitches. HeiQ Fresh technology ensures long lasting odour control for sustained use on big trips.



- 175g m² TENCEL™ and recycled polyester fabric; moisture management and comfort
- HeiQ Fresh odour neutralising technology; direct targeting of odour molecules
- TENCEL™ cellulose fibres give outstanding wicking performance
- Regular fit
- Scoop neck and racer back

Sizes: 8 to 16

Weight: 90g / 3.2oz (approx.)

Fabric: 175g / 5.2oz

Content: 76% Recycled Polyester, 19% Lyocell, 5% Elastane



ME-01820
Rosewood

ME-01863
Amethyst

ME-01839 Topaz

NEW COLOR



ME-006730

HEADPOINT WOMEN'S TEE

A light, stretchy and fast drying tee for searching out classic routes and long days in the mountains.



With a soft feel and TENCEL™ cellulose fibres this is a tee that balances all day comfort with fast drying technical performance for strenuous mountain days and nerve testing pitches. HeiQ Fresh technology ensures long lasting odour control for sustained use on big trips.



- 175g m² TENCEL™ and recycled polyester fabric; moisture management and comfort
- HeiQ Fresh odour neutralising technology; direct targeting of odour molecules
- TENCEL™ cellulose fibres give outstanding wicking performance
- Regular fit
- Crew neck

Sizes: 8 to 16

Weight: 130g / 4.6oz (approx.)

Fabric: 175g / 5.2oz

Content: 76% Recycled Polyester, 19% Lyocell, 5% Elastane



ME-01730 Raisin

ME-01863
Amethyst

ME-01820
Rosewood

TECHNICAL TOPS & TEES

LEGWEAR

MID LAYER

SOFT SHELL

SHELL

ACCESSORIES

INFORMATION

NEW



ME-007395

EQUINOX WOMEN'S VEST

A lightweight, stretchy and fast drying vest for hot climbing days or training for the next big project.



With the comfort of a cotton tee but the performance of a technical layer this is the ideal choice for summer days at the crag or in the hills. drirelease® fabric dries fast and has built in stretch whilst Polygiene anti-microbial technology offers odour control.



- 175g m² drirelease® and recycled polyester fabric; lightweight moisture management with stretch
- Polygiene StayFresh™ anti-microbial technology; reduces odour and washing requirements
- TENCEL™ cellulose fibres give outstanding wicking performance
- Slim fit
- Scoop neck and racer back with pleat detail

Sizes: 8 to 16

Weight: 100g / 3.5oz (approx.)

Fabric: 175g / 5.2oz (solid), 170g / 5.0oz (stripe)

Content: 82% Recycled Polyester, 11% Lyocell, 7% Elastane (solid) / 85% Recycled Polyester, 8% Lyocell, 7% Elastane (stripe)



ME-01909 Mandarin Stripe



ME-01910 Bluefin Stripe



ME-01438 Cosmos Stripe

NEW



ME-007393

GROUNDUP STRIPE WOMEN'S TEE

A slim yet unrestrictive tee that offers great wicking performance.



Whether you're trekking far from home or enjoying an after-work get together at your local crag, this tee with its mix of all-day comfort and technical performance is the perfect choice for any warm weather activity. Its drirelease® fabric dries fast whilst effortlessly wicking moisture.



- 175g m² drirelease® and recycled polyester fabric; lightweight moisture management with stretch
- Polygiene StayFresh™ anti-microbial technology; reduces odour and washing requirements
- TENCEL™ cellulose fibres give outstanding wicking performance
- Slim fit
- Crew neck

Sizes: 8 to 16

Weight: 160g / 5.6oz (approx.)

Fabric: 175g / 5.2oz (solid), 170g / 5.0oz (stripe)

Content: 82% Recycled Polyester, 11% Lyocell, 7% Elastane (solid) / 85% Recycled Polyester, 8% Lyocell, 7% Elastane (stripe)



ME-01910 Bluefin Stripe



ME-01819 Rosewood Stripe



ME-01564 Spruce Stripe

NEW



ME-007396

REDLINE LS WOMEN'S TEE

A lightweight, stretchy and highly wicking long sleeved tee that works for almost any activity in the mountains.



This comfortable long sleeved tee can be worn alone on south facing rock routes or far inside your layers during alpine starts thanks to its fast drying and stretchy drirelease® fabric. Polygiene antimicrobial technology gives long lasting odour control for sustained use.



- 175g m² drirelease® and recycled polyester fabric; lightweight moisture management with stretch
- Polygiene StayFresh™ anti-microbial technology; reduces odour and washing requirements
- TENCEL™ cellulose fibres give outstanding wicking performance
- Slim fit
- Crew neck

Sizes: 8 to 16

Weight: 170g / 6oz (approx.)

Fabric: 175g / 5.2oz (solid), 170g / 5.0oz (stripe)

Content: 82% Recycled Polyester, 11% Lyocell, 7% Elastane (solid) / 85% Recycled Polyester, 8% Lyocell, 7% Elastane (stripe)



ME-01911 Mandarin Stripe/Maj



ME-01939 Bluefin Stripe/Denim



ME-01463 Cosmos Stripe/Cosmos

TECHNICAL TOPS & TEES

LEGWEAR

MID LAYER

SOFT SHELL

SHELL

ACCESSORIES

INFORMATION

NEW



ME-007144

AIGUILLE HOODED WOMEN'S TOP

A stretch hooded top for keeping the sun and wind at bay on exposed crags.



An incredibly versatile climbing layer for routes from Pabbay to Patagonia, this is a top you can leave on all day. Durable stretch jersey fabric provides sun protection as well as some wind resistance and the hood and thumb loops help you cover up at belays.

- 175g m² stretch jersey fabric with durable face and soft inner
- Slim fit
- Close fitting hood
- Coverstitched seams throughout for next-to-skin comfort
- YKK® centre front zip for ventilation
- Chest pocket with YKK® zip
- Double layer cuffs with integrated thumb loops

Sizes: 8 to 16

Weight: 260g / 9.2oz (approx.)

Fabric: 175g / 5.2oz

Content: 90% Recycled Polyamide, 10% Elastane



ME-01790 Sage

ME-01845 Topaz/
Majolica

ME-01635 Majolica
Blue

NEW



ME-007143

FREEDOM WOMEN'S TEE

Organic cotton tee featuring an exclusive print.



Shared values connect us to other Alpinists. This original mountain inspired linocut print design is handmade by British artist Chris Williams. The graphic is screen-printed on a T-shirt made of 100% pre-washed Organic Cotton.



- 160g m² pre-washed 100% Organic Cotton
- Relaxed fit
- Crew neck
- Exclusive Mountain Equipment graphic



Sizes: 8 to 16

Weight: 120g / 4.2oz (approx.)

Fabric: 160g / 4.7oz

Content: 100% Organic Cotton



ME-01852
Mandarin Red

ME-01790 Sage

ME-01476 Denim
Blue

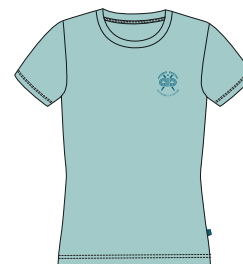
NEW



ME-007332

ALPINISM WOMEN'S TEE

Organic cotton tee featuring an exclusive print.



Shared values connect us to other Alpinists. This original mountain inspired linocut print design is handmade by British artist Chris Williams. The graphic is screen-printed on a T-shirt made of 100% pre-washed Organic Cotton.



- 160g m² pre-washed 100% Organic Cotton
- Relaxed fit
- Crew neck
- Exclusive Mountain Equipment graphic



Sizes: 8 to 16

Weight: 120g / 4.2oz (approx.)

Fabric: 160g / 4.7oz

Content: 100% Organic Cotton



ME-01937 Aqua

ME-01790 Sage

ME-01559
Capsicum Red

TECHNICAL TOPS & TEES

LEGWEAR

MID LAYER

SOFT SHELL

SHELL

ACCESSORIES

INFORMATION

Legwear



Susanne Stifmeier and Julius Kapeller
Dolomites,
Italy

MEN'S



Dynamo Men's Twin Short
NEW



Masino Men's Short



Anvil Men's Pant
NEW



Anvil Men's Short
NEW



Approach Men's Pant



Approach Men's Short



Inception Men's Pant



Inception Men's Short
NEW COLOR

WOMEN'S



Dynamo Women's Twin Short
NEW COLOR



Dynamo Women's Skort



Anvil Women's Pant
NEW



Anvil Women's Short
NEW



Altun Women's Pant
NEW



Approach Women's Short
NEW COLOR

TECHNICAL TOPS & TEES

LEGWEAR

MID LAYER

SOFT SHELL

SHELL

ACCESSORIES

INFORMATION

NEW



ME-007163

DYNAMO MEN'S TWIN SHORT

Lightweight and fast drying full stretch shorts for mountain running and hiking.



With a superlight stretch woven softshell outer fabric and built in stretch liner short these are the perfect choice for the fastest moving summer mountain days. A silicone print helps to prevent the inner short riding up on long ascents and a rear pocket keeps small valuables secure.

EXOLITE

- EXOLITE 100 stretch softshell fabric with FC free DWR
- Soft stretch inner boxer style short
- Stretch waistband with stretch drawcord adjustment
- Gusseted crotch
- Rear pocket with YKK® zip
- Inseam measurement 21.5cm / 8.5in [size L]

Sizes: S to XXL

Weight: 170g / 6oz (approx.)

Fabric: Outer: 102g / 3.0oz, Inner: 115g / 3.4oz

Content: Outer: 94% Polyamide, 6% Elastane. Inner: 85% Polyamide, 15% Elastane



ME-01595 Obsidian ME-01899 Admiral Blue



ME-006155

MASINO MEN'S SHORT

Our lightest stretch woven shorts for multi-day summer enchainments and mountain running.



These superlight, stretchy shorts are perfect for hot conditions and running through mixed summer weather. With an unrestrictive fit and fast drying fabric they're ideal for long ascents into high cirques and flying across endless ridgelines. Concealed, zipped pockets secure essentials and a wide waistband is comfortable wet or dry.

EXOLITE

- EXOLITE 100 stretch softshell fabric with FC free DWR
- Wide stretch waistband with stretch drawcord adjustment
- 2 asymmetric zipped pockets
- Inseam measurement 23cm / 9in [size L]
- Internal pocket

Sizes: 30 - 38

Weight: 150g / 5.3oz (approx.)

Fabric: 102g / 3.0oz

Content: 94% Polyamide, 6% Elastane



ME-01635 Majolica ME-01595 Obsidian Blue

TECHNICAL TOPS & TEES

LEGGING

MID LAYER

SOFT SHELL

SHELL

ACCESSORIES

INFORMATION

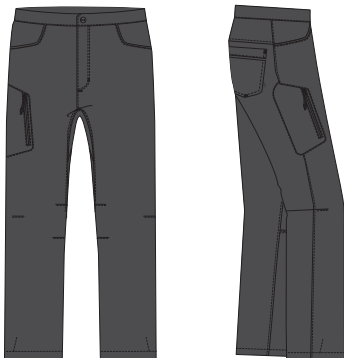
NEW



ME-007363

ANVIL MEN'S PANT

A comfortable stretch pant for climbers, at home everywhere from local boulders to iconic cliffs.



With our tailored climbing fit and a mid-weight stretch Organic cotton fabric these versatile pants bridge the gap between evening bouldering and the most inspiring lines. A zipped thigh pocket keeps a phone secure and the hem drawcords allow for pre-cru adjustments.



- Stretch Organic cotton blend fabric
- Climbing fit
- 2 hand pockets
- 2 rear pockets
- Thigh pocket with YKK® zip
- Low profile internal belt and metal button waist closure
- 2-way fly zip
- Gusseted crotch
- Adjustable hem drawcord

Sizes: 28 to 38

Leg Length: Short, Regular & Long

Weight: 360g / 12.7oz (approx.)

Fabric: 175g / 5.2oz

Content: 63% Organic Cotton, 33% Polyamide, 4% Elastane



ME-01011 Shadow Grey

NEW



ME-007365

ANVIL MEN'S SHORT

A comfortable stretch climbing short for strenuous routes and summer road trips.



With our climbing fit and mid-weight stretch Organic cotton fabric these shorts are as comfortable on a long approach as they are on the hard pitches that follow. A zipped thigh pocket keeps a phone secure and the low profile belt sits comfortably under a harness.



- Stretch Organic cotton blend fabric
- Climbing fit
- 2 hand pockets
- 2 rear pockets
- Thigh pocket with YKK® zip
- Low profile internal belt and metal button waist closure
- Fly zip
- Gusseted crotch
- Inseam measurement 28cm / 11in [size 34]

Sizes: 28 to 38

Weight: 250g / 8.8oz (approx.)

Fabric: 175g / 5.2oz

Content: 63% Organic Cotton, 33% Polyamide, 4% Elastane



ME-01807 Fern



ME-01635 Majolica Blue



ME-002020

APPROACH MEN'S PANT

Well fitting, functional and durable pants for any climbing or trekking adventure.



With an Active fit these fast drying pants offer all-day comfort when clocking up the miles. Zipped rear and thigh pockets provide safe storage for on the move essentials and a microfleece lined waist band and integrated belt sit comfortably under a harness or pack.

- Ascender fabric; light, tough and fast drying
- Alpine fit with articulated knee and gusseted crotch
- 2 front pockets
- Zipped rear and thigh pockets
- Integrated belt with button waist closure
- Microfleece lined waistband for improved comfort

Sizes: 30 to 40
Leg Length: Short, Regular & Long
Weight: 320g / 11.3oz (approx.)
Fabric: 130g / 3.8oz
Content: 100% Polyamide



ME-01011 Shadow Grey



ME-002022

APPROACH MEN'S SHORT

Well fitting functional shorts for any climbing or trekking adventure.



These lightweight, fast drying shorts are ideal for long climbs in arid climates and are equally suited to strenuous treks through hot, humid foothills. A microfleece lined waistband and integrated belt sit comfortably under a harness or pack.

- Ascender fabric; light, tough and fast drying
- Alpine fit with gusseted crotch
- 2 front pockets
- Zipped rear and thigh pockets
- Integrated belt with button waist closure
- Microfleece lined waistband for improved comfort
- Inseam measurement 23cm / 9in (size 34)

Sizes: 30 to 40
Weight: 230g / 8.1oz (approx.)
Fabric: 130g / 3.8oz
Content: 100% Polyamide



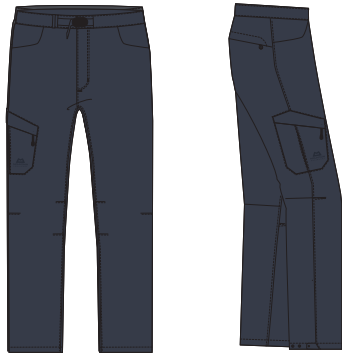
ME-01011 Shadow Grey ME-01403 Blue Nights



ME-005983

INCEPTION MEN'S PANT

Versatile, quick drying pants as at home in the mountains as they are on valley test pieces and roadside problems.



Ascender fabric balances the toughness required for awkward granite cracks against the mobility and quick drying performance needed for long Scottish trails and changeable forecasts. The Alpine fit offers comfort for long days and the low profile waist band sits perfectly under a harness.

- Ascender fabric; light, tough and fast drying
- Alpine fit with regular fit ankle
- 2 hand pockets
- Zipped rear pocket
- Thigh pocket
- Integrated low profile belt with double press-stud waist closure
- Adjustable hem

Sizes: 28 to 38

Leg Length: Short, Regular & Long

Weight: 320g / 11.3oz (approx.)

Fabric: 130g / 3.8oz

Content: 100% Polyamide



ME-01403 Blue Nights

NEW COLOR



ME-004113

INCEPTION MEN'S SHORT

Simple, lightweight climbers' shorts for hot approaches and long days on classic lines.



Tough and well-fitting, the Inception Short fits the bill for strenuous walk-ins and the sun-baked pitches that follow. Ascender fabric dries fast whether caught in a storm or heading for the river to escape the building heat and to sooth swollen feet.

- Ascender fabric; light, tough and fast drying
- Climbing fit
- 2 hand pockets
- Rear pocket
- Semi-elasticated waist with offset double press-stud waist closure
- Inseam measurement 30cm/12in (size 34)

Sizes: 28 to 38

Weight: 190g / 6.7oz (approx.)

Fabric: 130g / 3.8oz

Content: 100% Polyamide



ME-01011 Shadow Grey

ME-01403 Blue Nights



Harriet Ridley
Serengeti, Llanberis Slate Quarries
North Wales

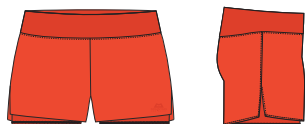
NEW COLOR



ME-005986

DYNAMO WOMEN'S TWIN SHORT

Lightweight and fast drying full stretch shorts for mountain running and hiking.



With a superlight stretch woven softshell outer fabric and built in stretch liner short these are the perfect choice for the fastest moving summer mountain days. A rear pocket keeps small valuables secure.

EXOLITE

- EXOLITE 100 stretch softshell fabric with FC free DWR
- Soft and stretchy inner short
- Rear pocket
- Wide stretch waistband with stretch drawcord adjustment
- Gusseted crotch on inner short
- Inseam measurement 10.5cm / 4in [size 12]

Sizes: 8 to 16

Weight: 120g / 4.2oz (approx.)

Fabric: Outer: 102g / 3.0oz Inner: 115g / 3.4oz

Content: Outer: 94% Polyamide, 6% Elastane. Inner: 85% Polyamide, 15% Elastane



ME-01852
Mandarin Red



ME-01635 Majolica
Blue



ME-004640

DYNAMO WOMEN'S SKORT

A technical, fast drying stretch Skort for the fastest moving trekking and training.



With Exolite 100 stretch softshell outer fabric and elasticated inner shorts the Dynamo Women's Skort is perfect for use in the mountains. A concealed zipped rear pocket keeps essentials secure and an integrated waist drawcord offers adjustment on the run.

EXOLITE

- EXOLITE 100 stretch softshell fabric with FC free DWR
- Stretch inner shorts
- Low volume stretch waistband with integrated drawcord
- 2 hand pockets
- Concealed rear pocket with YKK® zip
- Mid-thigh length with side slit
- Inner short measurement 13cm / 5in (size 12)

Sizes: 8 to 16

Weight: 150g / 5.3oz (approx.)

Fabric: Outer: 102g / 3.0oz Inner: 115g / 3.4oz

Content: Skort 94% Polyamide, 6% Elastane - Inner 85% Polyamide, 15% Elastane



ME-01730 Raisin



ME-01635 Majolica
Blue

TECHNICAL TOPS & TEES

LEGWEAR

MID LAYER

SOFT SHELL

SHELL

ACCESSORIES

INFORMATION

NEW

FC
Free

ME-007206

ANVIL WOMEN'S PANT

A comfortable stretch pant for climbers, at home everywhere from local boulders to iconic cliffs.



With our tailored climbing fit and a mid-weight stretch Organic cotton fabric these versatile pants bridge the gap between evening bouldering and the most inspiring lines. A deep stretch waistband maximises comfort while a deep stretch hem allows for precise and nimble footwork.



- Stretch Organic cotton blend fabric
- Climbing fit
- 2 hand pockets
- 2 rear pockets
- Deep stretch waistband with drawcord fastening
- Cinched stretch hem leg cuffs

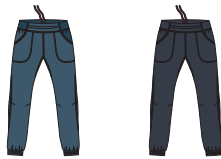
Sizes: 8 to 16

Leg Length: Short & Regular

Weight: 320g / 11.3oz (approx.)

Fabric: 175g / 5.2oz

Content: 63% Organic Cotton, 33% Polyamide, 4% Elastane



ME-01904 Indian
Teal

ME-01403 Blue
Nights

NEW

FC
Free

ME-007333

ANVIL WOMEN'S SHORT

A comfortable, stretch climbing short for strenuous routes and summer road trips.



With our climbing fit and mid-weight stretch Organic cotton fabric these shorts are as comfortable on a long approach as they are on the hard pitches that follow. A zipped thigh pocket keeps a phone secure and the low profile belt sits comfortably under a harness.



- Stretch Organic cotton blend fabric
- Climbing fit
- 2 hand pockets
- 2 rear pockets
- Deep stretch waistband with drawcord fastening
- Inseam measurement 14.5cm / 6in [size 12]

Sizes: 8 to 16

Weight: 180g / 6.3oz (approx.)

Fabric: 175g / 5.2oz

Content: 63% Organic Cotton, 33% Polyamide, 4% Elastane



ME-01403 Blue
Nights

ME-01904 Indian
Teal

NEW



ME-007148

ALTUN WOMEN'S PANT

Comfortable and versatile stretch trekking pants for everywhere from the GR20 to the Cape Wrath Trail.



The Altun Women's Pant combine soft stretch fabrics and a comfortable fit ideal for long trips in all but the hottest or coldest weather. A deep waistband with drawcord adjustment sits comfortably under a pack while hand, rear, and thigh pockets maximise versatility.

- 147g m² soft-touch fabric with stretch
- Mountain fit
- 2 hand pockets
- 2 rear pockets
- Thigh pocket with YKK® zip and mesh back
- Deep stretch waistband with drawcord fastening
- Double press-stud waist closure
- Adjustable hem

Sizes: 8 to 16

Leg Length: Short & Regular

Weight: 290g / 10.2oz (approx.)

Fabric: 147g / 4.3oz

Content: 97% Polyamide, 3% Elastane



ME-01915 Phantom

NEW COLOR



ME-002024

APPROACH WOMEN'S SHORT

Well fitting functional shorts for any climbing or trekking adventure.



These lightweight, fast drying shorts are ideal for long climbs in arid climates and are equally suited to strenuous treks through hot, humid foothills. A microfleece lined waistband and integrated belt sit comfortably under a harness or pack.

- Ascender fabric; light, tough and fast drying
- Active fit with gusseted crotch
- 2 front pockets
- Zipped rear and thigh pockets
- Integrated belt with button waist closure
- Leg tab adjustment
- Microfleece lined waistband for improved comfort
- Inseam measurement 18cm / 7in (size 12)

Sizes: 8 to 18

Weight: 180g / 6.3oz (approx.)

Fabric: 130g / 3.8oz

Content: 100% Polyamide



ME-01904 Indian Teal



ME-01403 Blue Nights

TECHNICAL TOPS & TEES

LEGWEAR

MID LAYER

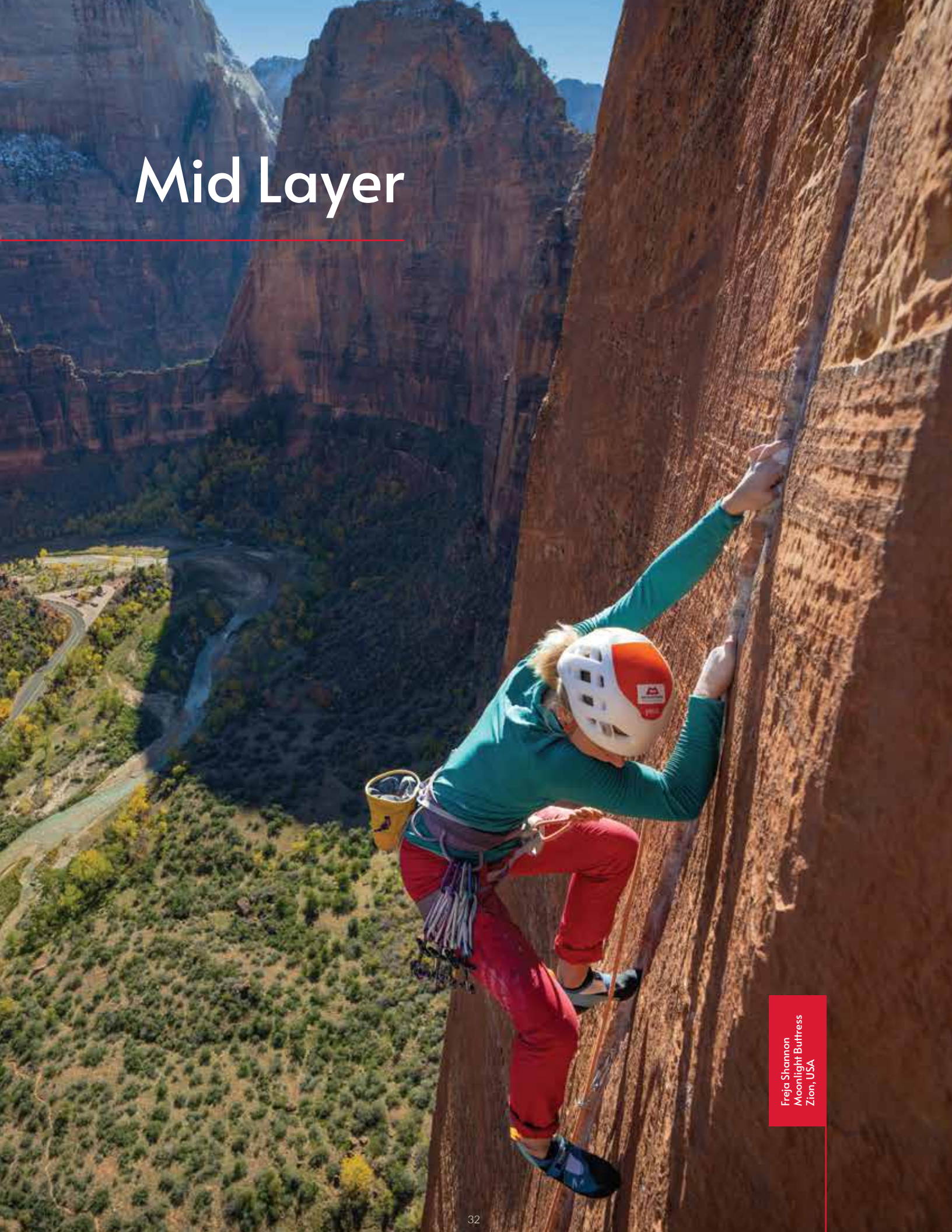
SOFT SHELL

SHELL

ACCESSORIES

INFORMATION

Mid Layer

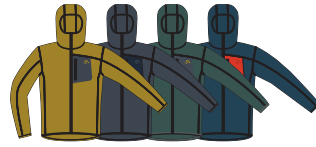


Freja Shannon
Moonlight Buttress
Zion, USA

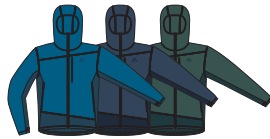
MEN'S



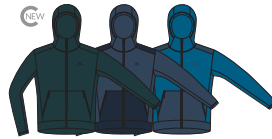
Lumiko Men's Zip-T



Lumiko Hooded Men's Jacket



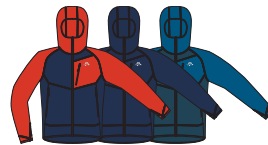
Durian Hooded Men's Jacket



Oracool Hooded Men's Jacket
NEW COLOR



Eclipse Hooded Men's Zip-T



Eclipse Hooded Men's Jacket

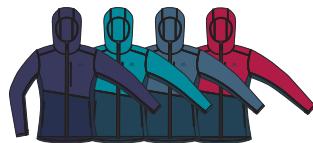
WOMEN'S



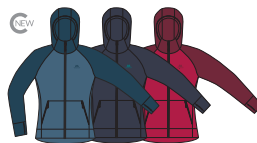
Lumiko Women's Zip-T



Lumiko Hooded Women's Jacket



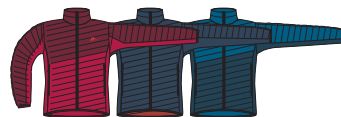
Durian Hooded Women's Jacket



Endika Hooded Women's Jacket
NEW COLOR



Eclipse Hooded Women's Jacket



Particle Women's Jacket

TECHNICAL TOPS & TEES

LEGWEAR

MID LAYER

SOFT SHELL

SHELL

ACCESSORIES

INFORMATION



ME-005360

LUMIKO MEN'S ZIP-T

A close fitting and fast drying lightweight fleece layer for hiking and mountaineering.



With performance stretch fleece fabric and a slimline Active fit the Lumiko is a perfect lightweight layer for fast moving climbing and mountaineering. Drying quickly after a lung burning approach it works equally well under a shell high on the route.

- 162g m² stretch brushed-back stretch fleece for warmth and comfort
- Active fit
- Coverstitched seams throughout for next-to-skin comfort
- YKK® deep centre front zip for ventilation
- Zipped Napoleon pocket
- Low bulk cuffs

Sizes: S to XXL

Weight: 230g / 8.1oz (approx.)

Fabric: 162g / 4.8oz

Content: Main: 93% Recycled Polyester, 7% Elastane; Overlay: 87% Polyamide, 13% Elastane



ME-01707 Majolica/Cardinal

ME-01652 Acid/Ombre



ME-01817 Fern/Ombre

ME-01836 Red Rock/Ombre



ME-005359

LUMIKO HOODED MEN'S JACKET

A light and fast drying stretch fleece jacket for climbing, hiking and mountaineering.



With performance stretch fleece fabric and a slimline Active fit the Lumiko is an ideal lightweight fleece layer for everything from climbing close to the road to big days in the Alps. A grown-on hood adds valuable extra warmth on belays and a zipped chest pocket keeps essentials secure.

- 162g m² stretch brushed-back stretch fleece for warmth and comfort
- Active fit
- Coverstitched seams throughout for next-to-skin comfort
- Grown-on hood
- YKK® centre front zip
- Zipped Napoleon pocket
- Low bulk cuffs

Sizes: S to XXL

Weight: 270g / 9.5oz (approx.)

Fabric: 162g / 4.8oz

Content: Main: 93% Recycled Polyester, 7% Elastane; Overlay: 87% Polyamide, 13% Elastane



ME-01652 Acid/Ombre

ME-01316 Ombre Blue/Cosmos



ME-01707 Majolica/Cardinal

ME-01817 Fern/Ombre



ME-006951

DURIAN HOODED MEN'S JACKET

A lightweight, hardfaced fleece that balances warmth, breathability and protection for high intensity ski touring and mountaineering.



With a microgrid inner layer to wick moisture fast and a densely woven outer face for wind resistance the Durian is the ideal jacket for working hard in mixed conditions. Stretchy and unrestrictive it can be worn as an outer layer or under a shell in more severe weather.

- 270g m² microgrid stretch fleece with hardface for warmth and wind resistance
- Active fit
- Over-locked and top-stitched construction throughout for next-to-skin comfort
- Elastane bound hood
- 2 zipped hand warmer pockets
- Napoleon chest pocket with YKK® zip
- YKK® centre front zip
- Thumb loops

Sizes: S to XXL

Weight: 520g / 18.3oz (approx.)

Fabric: 270g / 8.0oz

Content: 94% recycled polyester, 6% elastane



ME-01680 Mykonos/Majolica

ME-01746 Dusk/Cosmos

ME-01847 Fern/Pine

NEW COLOR



ME-006717

ORACOOO HOODED MEN'S JACKET

A comfortable and fast drying hoody for climbing road trips and evening missions.



The Oracool Hooded Jacket's TENCEL™ cellulose fibres give outstanding wicking performance with a brushed knit inner face that offers just enough warmth as the sun moves off the rock. The slim, athletic fit is ideal for climbing or bouldering and the hood offers extra protection from sun and cool breezes.



- 225g m⁻² recycled polyester and TENCEL™ blend brushed knit
- TENCEL™ cellulose fibres give outstanding wicking performance
- Grown-on hood
- YKK® moulded centre front zip
- 2 zipped hand pockets
- Double layer hem

Sizes: S to XXL

Weight: 410g / 14.5oz (approx.)

Fabric: 225g / 6.6oz

Content: 90% Recycled Polyester, 6% Lyocell, 4% Elastane



ME-01866 Pine

ME-01746 Dusk/
Cosmos

ME-01824
Mykonos/Dusk



ME-005727

ECLIPSE HOODED MEN'S ZIP-T

A close fitting hooded zip-t that provides the optimum base or mid-layer for winter and alpine climbing.



The Eclipse Hooded Zip-T is a specialist piece designed for serious use. Pontetorto® Tecnostretch fleece provides warmth without bulk whilst drying exceptionally fast after a strenuous approach. The close fitting hood with full face protection works perfectly under a helmet.



- Pontetorto® Tecnostretch 187 gridded fleece for warmth and minimal bulk
- Polygiene StayFresh™ anti-microbial technology; reduces odour and washing requirements
- Active fit with longer length body
- Close fitting hood with face protection and offset closure
- Coverstitched seams throughout for next-to-skin comfort
- 2-way YKK® offset deep centre front zip for ventilation
- Zipped Napoleon pocket with mesh back
- Low bulk cuffs with integrated thumb loops

Sizes: S to XXL

Weight: 290g / 10.2oz (approx.)

Fabric: 187g / 5.5oz

Content: 92% Recycled Polyester, 8% Elastane



ME-01596
Medieval Blue

ME-01644 Magma/
Medieval



ME-005722

ECLIPSE HOODED MEN'S JACKET

A light and fast drying stretch fleece jacket that's perfect for hiking and classic alpine ascents.



Providing impressive warmth for its minimal weight and bulk the Eclipse Hooded Jacket is an essential layer for everything from ski touring to valley walks. A stretchy grown on hood gives added versatility whilst 3 zipped pockets keep essentials secure and thumb loops layer under gloves on freezing days.



- Pontetorto® Tecnostretch 238 gridded fleece for warmth and minimal bulk
- Polygiene StayFresh™ anti-microbial technology; reduces odour and washing requirements
- Active fit
- Grown-on hood
- Coverstitched seams throughout for next-to-skin comfort
- YKK® moulded centre front zip
- Zipped Napoleon pocket with mesh back
- 2 hand warmer pockets
- Low bulk cuffs with integrated thumb loops

Sizes: S to XXL

Weight: 410g / 14.5oz (approx.)

Fabric: 238g / 7.0oz

Content: 93% Recycled Polyester, 7% Elastane



ME-01638
Medieval/Cardinal

ME-01596
Medieval Blue

ME-01679
Majolica/Mykonos

TECHNICAL TOPS & TEES

LEGWEAR

MID LAYER

SOFT SHELL

SHELL

ACCESSORIES

INFORMATION



ME-005369

LUMIKO WOMEN'S ZIP-T

A close fitting and fast drying lightweight fleece layer for hiking and mountaineering.



With performance stretch fleece fabric and a slimline Active fit the Lumiko is a perfect lightweight layer for fast moving climbing and mountaineering. Drying quickly after a lung burning approach it works equally well under a shell high on the route.

- 162g m² stretch brushed-back stretch fleece for warmth and comfort
- Active fit
- Coverstitched seams throughout for next-to-skin comfort
- YKK® deep centre front zip for ventilation
- Zipped Napoleon pocket
- Low bulk cuffs

Sizes: 8 to 20

Weight: 190g / 6.7oz (approx.)

Fabric: 162g / 4.8oz

Content: Main: 93% Recycled Polyester, 7% Elastane; Overlay: 87% Polyamide, 13% Elastane



ME-01818 Raisin/
Ombre

ME-01756
Rhubarb/Capsicum



ME-01850 Stellar/
Majolica

ME-01853
Amethyst/Medieval



ME-005368

LUMIKO HOODED WOMEN'S JACKET

A light and fast drying stretch fleece jacket for climbing, hiking and mountaineering.



With performance stretch fleece fabric and a slimline Active fit the Lumiko is an ideal lightweight fleece layer for everything from climbing close to the road to big days in the Alps. A grown-on hood adds valuable extra warmth on belays and a zipped chest pocket keeps essentials secure.

- 162g m² stretch brushed-back stretch fleece for warmth and comfort
- Active fit
- Coverstitched seams throughout for next-to-skin comfort
- Grown-on hood
- YKK® centre front zip
- Zipped Napoleon pocket
- Low bulk cuffs

Sizes: 8 to 16

Weight: 220g / 7.8oz (approx.)

Fabric: 162g / 4.8oz

Content: Main: 93% Recycled Polyester, 7% Elastane; Overlay: 87% Polyamide, 13% Elastane



ME-01756
Rhubarb/Capsicum

ME-01818 Raisin/
Ombre



ME-01850 Stellar/
Majolica

ME-01853
Amethyst/Medieval



ME-006929

DURIAN HOODED WOMEN'S JACKET

A lightweight, hardfaced fleece that balances warmth, breathability and protection for high intensity ski touring and mountaineering.



With a microgrid inner layer to wick moisture fast and a densely woven outer face for wind resistance the Durian is the ideal jacket for working hard in mixed conditions. Stretchy and unrestrictive it can be worn as an outer layer or under a shell in more severe weather.

- 270g m² microgrid stretch fleece with hardface for warmth and wind resistance
- Active fit
- Over-locked and top-stitched construction throughout for next-to-skin comfort
- Elastane bound hood
- 2 zipped hand warmer pockets
- Napoleon chest pocket with YKK® zip
- YKK® centre front zip
- Thumb loops

Sizes: 8 to 16

Weight: 420g / 14.8oz (approx.)

Fabric: 270g / 8.0oz

Content: 94% Recycled Polyester, 6% Elastane



ME-01853
Amethyst/Medieval

ME-01845 Topaz/
Majolica



ME-01717
Capsicum/Majolica

ME-01850 Stellar/
Majolica

NEW COLOR



ME-006720

ENDIKA HOODED WOMEN'S JACKET

A comfortable and fast drying hoody for climbing road trips and evening missions.



The Endika Hooded Women's Jacket's TENCEL™ cellulose fibres give outstanding wicking performance with a brushed knit inner face that offers just enough warmth as the sun moves off the rock. The athletic fit is ideal for climbing or bouldering and the hood offers extra protection from sun and cool breezes.



- 225g m² recycled polyester and TENCEL™ blend brushed knit
- TENCEL™ cellulose fibres give outstanding wicking performance
- Grown-on hood
- YKK® moulded centre front zip
- 2 zipped hand pockets
- Double layer cuffs with thumb loops
- Double layer hem

Sizes: 8 to 16

Weight: 360g / 12.7oz (approx.)

Fabric: 225g / 6.6oz

Content: 90% Recycled Polyester, 6% Lyocell, 4% Elastane



ME-01930 Stellar/
Dusk

ME-01286 Cosmos

ME-01753
Capsicum/
Tibetan Red

ME-005761

ECLIPSE HOODED WOMEN'S JACKET

A light and fast drying stretch fleece jacket that's perfect for hiking and classic alpine ascents.



Providing impressive warmth for its minimal weight and bulk the Eclipse Hooded Women's Jacket is an essential layer for everything from ski touring to valley walks. A stretchy grown on hood gives added versatility and thumb loops layer under gloves on freezing days.



- Pontetorto® Tecnostretch 238 gridded fleece for warmth and minimal bulk
- Polygiene StayFresh™ anti-microbial technology; reduces odour and washing requirements
- Active fit
- Grown-on hood
- Coverstitched seams throughout for next-to-skin comfort
- YKK® moulded centre front zip
- 2 hand warmer pockets
- Low bulk cuffs with integrated thumb loops

Sizes: 8 to 16

Weight: 370g / 13.1oz (approx.)

Fabric: 238g / 7.0oz

Content: 93% Recycled Polyester, 7% Elastane



ME-01870 Topaz/
Medieval

ME-01596
MoltenRed/
Capsicum

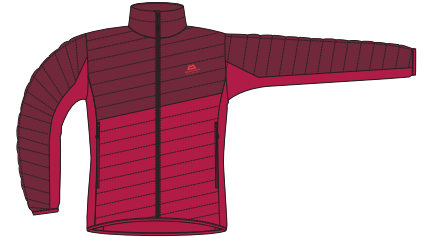
ME-01679
Majolica/Mykonos



ME-006334

PARTICLE WOMEN'S JACKET

A hybrid insulated jacket that thrives on mountaineering and ski-touring in cold conditions.



Combining 100% recycled POLARLOFT® Featherless insulation with stretch fleece panes in key areas the Particle Women's Jacket provides insulation you can move in, whether worn alone in good weather or under a shell in severe conditions. Packing into its own hand pocket when not required it provides indispensable warmth.



- 100% recycled 20D outer fabric is lightweight and windproof, with FC free DWR
- 87g (Size 12) of 100% recycled POLARLOFT® Featherless insulation by 3M®
- 240g m² stretch fleece inserts with brushed inner face
- Alpine fit
- Stitched-through narrow-baffle construction
- YKK® moulded centre front zip
- 2 zipped hand warmer pockets
- Elastane bound cuffs and hem
- Packs into hand pocket with twin karabiner carry loops

Sizes: 8 to 16

Weight: 310g / 10.9oz (approx.)

Fabric: Main: 20D - 39g / 1.2oz Inserts: 240g / 7.1oz

Content: 100% Recycled Polyamide outer/inner, 100% Recycled Polyester fill. Inserts: 94% Recycled Polyester, 6% Elastane



ME-01753
Capsicum/
Tibetan Red

ME-01751 Dusk

ME-01679
Majolica/Mykonos

TECHNICAL TOPS & TEES

LEGWEAR

MID LAYER

SOFT SHELL

SHELL

ACCESSORIES

INFORMATION

Soft Shell



Callum Johnson
Salle Athée, Aiguille du Moine
Charmonix, France

MEN'S



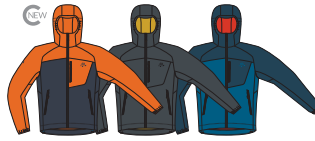
Arrow Hooded Men's Jacket
NEW COLOR



Aerofoil Full Zip Men's Jacket



Aerotherm Men's Vest
NEW



Aerotherm Men's Jacket
NEW COLOR



Squall Hooded Men's Jacket



Ibex Mountain Men's Pant



Ibex Mountain Men's Short



Comici Men's Pant



Comici Men's Short

WOMEN'S



Arrow Women's Jacket
NEW COLOR



Arrow Hooded Women's Jacket
NEW COLOR



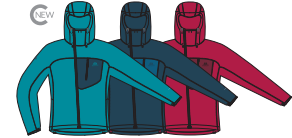
Aerofoil Full Zip Women's Jacket



Aerotherm Women's Vest
NEW



Aerotherm Women's Jacket
NEW COLOR



Squall Hooded Women's Jacket
NEW COLOR



Chamois Women's Pant



Comici Women's Pant



Comici Women's Short

TECHNICAL TOPS & TEES

LEGWEAR

MID LAYER

SOFT SHELL

SHELL

ACCESSORIES

INFORMATION

NEW COLOR



ME-006529

ARROW HOODED MEN'S JACKET

A lightweight and highly adaptable hooded jacket for mountaineers and climbers.



The Arrow Hooded Jacket combines the wind resistance, wicking and warmth for days in the mountains with the unimpeded mobility required on steep ground. Three zipped pockets keep essentials close to hand and our Mountain Hood provides valuable extra protection on Alpine routes.

- 182g m² double weave fabric with lofted inner face is wind resistant, wicking and comfortable
- Men's Active fit
- Elastane bound Mountain Hood
- Coverstitched seams
- YKK® centre front zip
- 2 zipped hand pockets and 1 Napoleon chest pocket
- Dual tether hem drawcords

Sizes: S to XXL

Weight: 370g / 13.1oz (approx.)

Fabric: 182g / 5.4oz

Content: 90% Polyester, 10% Elastane



ME-01848 RedRock/Dusk

ME-01899 Admiral Blue

ME-01847 Fern/Pine



ME-004616

AEROFOIL FULL ZIP MEN'S JACKET

An incredibly light double woven softshell that provides essential windproof protection for mountain rock routes and stripped back Alpine sprints.



Making use of the lightest possible double weave softshell fabric this windproof shell is a super breathable essential on alpine rock routes and fast moving enchainments. A close fitting hood accommodates a helmet when required and a single chest pocket stores the essentials whilst doubling as a stuff sack as the temperature rises.

EXOLITE

- EXOLITE 45 stretch double weave softshell fabric
- Elastane bound Mountain Hood with rear adjustment
- Active fit with articulated and pre-shaped sleeves
- Over-locked and topstitched construction throughout
- YKK® moulded centre front zip
- Zipped Napoleon chest pocket
- Elastane bound cuffs and hem drawcord
- Packs into pocket with twin karabiner carry loops

Sizes: S to XXL

Weight: 120g / 4.2oz (approx.)

Fabric: 45g / 1.3oz

Content: 100% Polyamide



ME-01795 Ember

ME-01403 Blue Nights

ME-01790 Sage

TECHNICAL TOPS & TEES

LEGWEAR

MID LAYER

SOFT SHELL

SHELL

ACCESSORIES

INFORMATION

NEW



ME-007189

AEROTHERM MEN'S VEST

A windproof and fast drying vest with added core warmth for hiking and running in the high mountains.



With a super light double weave softshell fabric and a moisture wicking micro-grid lining, this versatile vest keeps out the wind whilst still offering a little warmth in exposed situations. Drying rapidly after the ascent it's an adaptable booster layer for use year round.

EXOLITE

- EXOLITE 45 stretch double weave softshell fabric
- Micro-grid wicking lining on body to regulate temperature and next-to-skin comfort
- YKK® moulded centre front zip
- 2 zipped hand pockets and 1 Napoleon chest pocket
- Semi-elasticated hem and armholes
- Packs into pocket with twin karabiner carry loops

Sizes: S to XXL

Weight: 200g / 7.1oz (approx.)

Fabric: 45g / 1.3oz - 82g / 2.4oz

Content: Outer: 100% Polyamide. Lining: 100% Recycled Polyester



ME-01636 Alto/
Majolica



ME-01928
BlueNights/Ember



ME-01790 Sage

NEW COLOR



ME-006687

AEROTHERM MEN'S JACKET

A windproof and fast drying lightweight layer with added warmth for hiking and running in the high mountains.



With a super light double weave softshell fabric and a moisture wicking micro-grid lining, this versatile layer keeps out the wind whilst still offering a little warmth in exposed situations. Drying rapidly after the ascent it's a jacket you can keep on in fast changing conditions.

EXOLITE

- EXOLITE 45 stretch double weave softshell fabric
- Micro-grid wicking lining on body to regulate temperature and next-to-skin comfort
- Adjustable Mountain Hood with rolldown storage
- Active fit with articulated and pre-shaped sleeves
- YKK® moulded centre front zip
- 2 zipped hand pockets and 1 Napoleon chest pocket
- Elastane bound cuffs and dual tether hem drawcords
- Packs into pocket with twin karabiner carry loops

Sizes: S to XXL

Weight: 300g / 10.6oz (approx.)

Fabric: 45g / 1.3oz - 82g / 2.4oz

Content: Outer: 100% polyamide; lining: 100% polyester



ME-01928
BlueNights/Ember

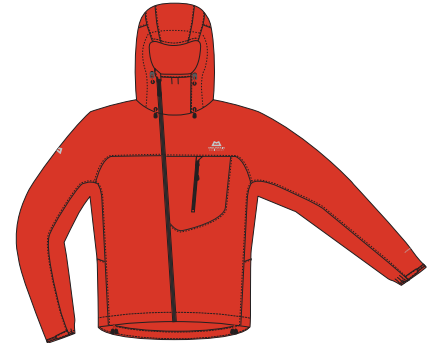
ME-01560 Anvil
Grey

ME-01636 Alto/
Majolica

ME-002928

SQUALL HOODED MEN'S JACKET

The ultimate rock climbing softshell; light, tough and protective it's the definitive choice for everything from big walls to sea cliffs.



With its cavernous helmet compatible hood, offset front zip and minimalist single pocket design the Squall is truly at home in any climbing situation. A stretchy double weave EXOLITE fabric and precise Active fit offers both the toughness and unhindered movement necessary for those who find themselves making moves on hard rock and ice.

EXOLITE

- EXOLITE 125 stretch double weave softshell fabric with FC free DWR
- Mountain HC Hood is fully adjustable
- Active fit with articulated and pre-shaped sleeves
- Over-locked and topstitched construction throughout
- YKK® offset moulded centre front zip
- Zipped Napoleon chest pocket
- Adjustable cuffs and dual tether hem drawcords
- Packs into chest pocket with twin karabiner carry loops

Sizes: S to XXL

Weight: 320g / 11.3oz (approx.)

Fabric: 125g / 3.7oz

Content: 87% Polyamide, 13% Elastane



ME-01286 Cosmos

ME-01252 Cardinal
Orange

TECHNICAL TOPS & TEES

LEGWEAR

MID LAYER

SOFT SHELL

SHELL

ACCESSORIES

INFORMATION



ME-000850

IBEX MOUNTAIN MEN'S PANT

A proven best seller, this versatile softshell Pant is ideal for mountaineering and trekking in cooler conditions year round.

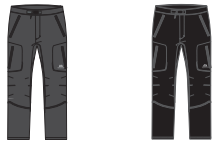


Designed for the adventurous hill-walker, scrambler and mountaineer in need of a lightweight mountain pant that can cope with technical terrain and fluctuating temperatures. Perfect for long days above the tree line.

EXOLITE

- EXOLITE 210 stretch double weave softshell fabric
- Alpine fit with regular fit ankle
- 2 zipped hand pockets and 1 rear zipped pocket
- 2 zipped thigh pockets with integrated mesh lining
- Integrated belt with double press-stud waist closure
- Microfleece lined waistband for improved comfort
- Ankle zips with internal gusset panel to accommodate all mountain boots
- Drawcord channel at hem (drawcord not included)

Sizes: 28 to 40
Leg Length: Short, Regular & Long
Weight: 450g / 15.9oz (approx.)
Fabric: 210g / 6.2oz
Content: 92% Polyamide, 8% Elastane



ME-01560 Anvil Grey

ME-01004 Black



ME-004643

IBEX MOUNTAIN MEN'S SHORT

Stretchy, tough softshell shorts for adventurous trekking and scrambling on warmer days in the mountains.



EXOLITE 210 stretch double weave fabric give robust, comfortable performance and dries fast after a summer downpour. Four zipped pockets secure the essentials whether on the trail or travelling through mountain towns and an integrated belt sits comfortably under a pack.

EXOLITE

- EXOLITE 210 stretch double weave softshell fabric
- Alpine fit
- 2 zipped hand pockets and 1 rear zipped pocket
- 1 zipped thigh pocket with integrated mesh lining
- Integrated belt with double press-stud waist closure
- Microfleece lined waistband for improved comfort
- Inseam measurement 27.5cm / 11in

Sizes: 28 to 40
Weight: 280g / 9.9oz (approx.)
Fabric: 210g / 6.2oz
Content: 92% Polyamide, 8% Elastane



ME-01560 Anvil Grey

ME-01004 Black



ME-004647

COMICI MEN'S PANT

Light, stretchy softshell pants that repel wind and moisture, the ideal choice for multipitch rock routes and summer scrambles.



Lightweight EXOLITE 125 fabric is stretchy, wind resistant and fast drying to make it perfect for long approaches and mountain crags. Our Active fit with slim ankle excels when moving rapidly on technical terrain and ensures unhindered movement when climbing hard pitches.

EXOLITE

- EXOLITE 125 stretch double weave softshell fabric with FC free DWR
- Active fit with slim fit ankle
- 2 zipped hand pockets
- Zipped thigh and rear pocket
- Integrated low profile belt with double press-stud waist closure
- Adjustable hem drawcord

Sizes: 28 to 38
Leg Length: Short, Regular & Long
Weight: 280g / 9.9oz (approx.)
Fabric: 125g / 3.7oz
Content: 87% Polyamide, 13% Elastane



ME-01318 Ombre Blue



ME-004666

COMICI MEN'S SHORT

Well fitting, stretchy and quick drying shorts for hot days of climbing and trekking in the mountains.



Tough, stretchy and quick drying, Comici Shorts are perfect for sustained climbing and active use in warm environments. Our Active fit ensures you won't be held back whether on a single pitch evening climb in the height of summer or carrying loads to a remote big wall.

EXOLITE

- EXOLITE 125 stretch double weave softshell fabric with FC free DWR
- Active fit
- 2 zipped hand pockets
- Zipped thigh and rear pocket
- Integrated low profile belt with double press-stud waist closure
- Inseam measurement 29.5cm / 12in [size 34]

Sizes: 28 to 38
Weight: 190g / 6.7oz (approx.)
Fabric: 125g / 3.7oz
Content: 87% Polyamide, 13% Elastane



ME-01318 Ombre Blue

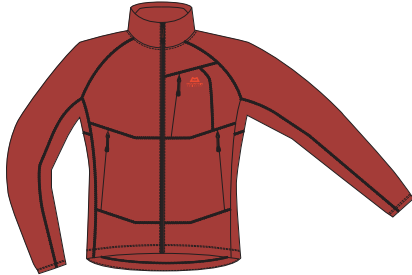
NEW COLOR

FC
Free

ME-005593

ARROW WOMEN'S JACKET

A lightweight and highly adaptable jacket for climbers and mountaineers.



The Arrow Women's Jacket combines the wind resistance, wicking and warmth for days in the mountains with the unimpeded mobility required for contorted crux moves. Three zipped pockets keep essentials close to hand and a full zip allows fast layering.

- 182g m² double weave fabric with lofted inner face is wind resistant, wicking and comfortable
- Active fit
- Coverstitched seams
- YKK® centre front zip
- 2 zipped hand pockets and Napoleon chest pocket

Sizes: 8 to 16

Weight: 300g / 10.6oz (approx.)

Fabric: 182g / 5.4oz

Content: 90% Polyester, 10% Elastane.

NEW



ME-01943 Topaz/
Dusk

ME-01743 Red
Rock

ME-01558 Spruce

NEW COLOR

FC
Free

ME-006553

ARROW HOODED WOMEN'S JACKET

A lightweight and highly adaptable hooded jacket for mountaineers and climbers.



The Arrow Hooded Jacket combines the wind resistance, wicking and warmth for days in the mountains with the unimpeded mobility required on steep ground. Three zipped pockets keep essentials close to hand and our Mountain Hood provides valuable extra protection on Alpine routes.

- 182g m² double weave fabric with lofted inner face is wind resistant, wicking and comfortable
- Active fit
- Elastane bound Mountain Hood
- Coverstitched seams
- YKK® centre front zip
- 2 zipped hand pockets and 1 Napoleon chest pocket
- Dual tether hem drawcords

Sizes: 8 to 16

Weight: 340g / 12.0oz (approx.)

Fabric: 182g / 5.4oz

Content: 90% Polyester, 10% Elastane

NEW



ME-01942 Dusk/
Topaz

ME-01943 Topaz/
Dusk

ME-01743 Red
Rock



ME-004680

AEROFOIL FULL ZIP WOMEN'S JACKET

An incredibly light double woven softshell that provides essential windproof protection for mountain rock routes and stripped back Alpine sprints.



With a windproof yet super breathable Ultratherm lined body and fast drying, lightweight fleece arms this close fitting hybrid jacket is the perfect layer for athletic, high output mountain activity. Whether racking up vertical training kilometers or putting it all to the test on a non-stop range traverse, the Trembler is essential kit.

EXOLITE

- EXOLITE 45 stretch double weave softshell fabric
- Elastane bound Mountain Hood with rear adjustment
- Active fit with articulated and pre-shaped sleeves
- Over-locked and topstitched construction throughout
- YKK® moulded centre front zip
- Zipped Napoleon chest pocket
- Elastane bound cuffs and hem drawcord
- Packs into pocket with twin karabiner carry loops

Sizes: 8 to 16

Weight: 100g / 3.5oz (approx.)

Fabric: 45g / 1.3oz

Content: 100% Polyamide

NEW



ME-01793 Jade

ME-01403 Blue
Nights

ME-01559
Capsicum Red

TECHNICAL TOPS & TEES

LEGGWEAR

MID LAYER

SOFT SHELL

SHELL

ACCESSORIES

INFORMATION

NEW



ME-007211

AEROTHERM WOMEN'S VEST

A windproof and fast drying vest with added core warmth for hiking and running in the high mountains.



With a super light double weave softshell fabric and a moisture wicking micro-grid lining, this versatile vest keeps out the wind whilst still offering a little warmth in exposed situations. Drying rapidly after the ascent it's an adaptable booster layer for use year round.

EXOLITE

- EXOLITE 45 stretch double weave softshell fabric
- Micro-grid wicking lining on body to regulate temperature and next-to-skin comfort
- YKK® moulded centre front zip
- 2 zipped hand pockets and 1 Napoleon chest pocket
- Semi-elasticated hem and armholes
- Packs into pocket with twin karabiner carry loops

Sizes: 8 to 16

Weight: 180g / 6.3oz (approx.)

Fabric: 45g / 1.3oz - 82g / 2.4oz

Content: Outer: 100% Polyamide. Lining: 100% Recycled Polyester



ME-01793 Jade

ME-01928
BlueNights/EmberME-01720
Majolica/Capsicum

NEW COLOR



ME-006705

AEROTHERM WOMEN'S JACKET

A windproof and fast drying lightweight layer with added core warmth for hiking and running in the high mountains.



With a super light double weave softshell fabric and a moisture wicking micro-grid lining, this versatile layer keeps out the wind whilst still offering a little warmth in exposed situations. Drying rapidly after the ascent it's a jacket you can keep on in fast changing conditions.

EXOLITE

- EXOLITE 45 stretch double weave softshell fabric
- Micro-grid wicking lining on body to regulate temperature and next-to-skin comfort
- Adjustable Mountain Hood with rolldown storage
- Women's Active fit with articulated and pre-shaped sleeves
- YKK® moulded centre front zip
- 2 zipped hand pockets and 1 Napoleon chest pocket
- Elastane bound cuffs and dual tether hem drawcords
- Packs into pocket with twin karabiner carry loops

Sizes: 8 to 16

Weight: 270g / 9.5oz (approx.)

Fabric: 45g / 1.3oz - 82g / 2.4oz

Content: Outer: 100% polyamide; lining: 100% polyester

ME-01720
Majolica/CapsicumME-01928
BlueNights/Ember

ME-01793 Jade

NEW COLOR



ME-006819

SQUALL HOODED WOMEN'S JACKET

The ultimate rock climbing softshell; light, tough and protective it's the definitive choice for everything from big walls to sea cliffs.



With its cavernous helmet compatible hood, offset front zip and minimalist single pocket design the Squall is truly at home in any climbing situation. A stretchy double weave EXOLITE fabric and precise Active fit offers both the toughness and unhindered movement necessary for those who find themselves making moves on hard rock and ice.

EXOLITE

- EXOLITE 125 stretch double weave softshell fabric with FC free DWR
- Mountain HC Hood is fully adjustable
- Active fit with articulated and pre-shaped sleeves
- Over-locked and topstitched construction throughout
- YKK® offset moulded centre front zip
- Zipped Napoleon chest pocket
- Adjustable cuffs and dual tether hem drawcords
- Packs into chest pocket with twin karabiner carry loops

Sizes: 8 to 16

Weight: 280g / 9.9oz (approx.)

Fabric: 125g / 3.7oz

Content: 87% Polyamide, 13% Elastane

Me-01845 Topaz/
MajolicaME-01640
Majolica/Alto blueME-01753
Capsicum/
TibetanRed

TECHNICAL TOPS & TEES

LEGWEAR

MID LAYER

SOFT SHELL

SHELL

ACCESSORIES

INFORMATION



ME-000851

CHAMOIS WOMEN'S PANT

A proven best seller, this versatile softshell pant is ideal for mountaineering and trekking in cooler conditions year round.



Designed for the adventurous hill-walker, scrambler and mountaineer in need of a lightweight mountain pant that can cope with technical terrain and fluctuating temperatures. Perfect for long days above the tree line.

EXOLITE

- EXOLITE 210 stretch double weave softshell fabric
- Alpine fit with regular fit ankle
- 2 zipped hand pockets
- 2 zipped thigh pockets with integrated mesh lining for venting
- Integrated belt with double press-stud waist closure
- Microfleece lined waistband for improved comfort
- Ankle zips with internal gusset panel to accommodate all mountain boots
- Drawcord channel at hem (drawcord not included)

Sizes: 8 to 20

Leg Length: Short, Regular & Long

Weight: 410g / 14.5oz (approx.)

Fabric: 210g / 6.2oz

Content: 92% Polyamide, 8% Elastane



ME-01560 Anvil Grey



ME-01004 Black

TECHNICAL TOPS & TEES

LEGWEAR

MID LAYER

SOFT SHELL

SHELL

ACCESSORIES

INFORMATION



ME-006707

COMICI WOMEN'S PANT

Light, stretchy softshell pants that repel wind and moisture; the ideal choice for multipitch rock routes and summer scrambles.



Lightweight EXOLITE 125 fabric is stretchy, wind resistant and fast drying to make it perfect for long approaches and mountain crags. Our Active fit with slim ankle excels when moving rapidly on technical terrain and ensures unhindered movement when climbing hard pitches.

EXOLITE

- EXOLITE 125 stretch double weave softshell fabric with FC free DWR
- Active fit with slim fit ankle
- 2 zipped hand pockets
- Zipped thigh pocket
- Integrated low-profile belt with press-stud waist closure
- Adjustable hem drawcord

Sizes: 8 to 16

Leg Length: Short, Regular & Long

Weight: 240g / 8.5oz (approx.)

Fabric: 125g / 3.7oz

Content: 87% Polyamide, 13% Elastane



ME-01004 Black

ME-01318 Ombre Blue



ME-006708

COMICI WOMEN'S SHORT

Well fitting, stretchy and quick drying shorts for hot days of climbing and trekking in the mountains.



Tough, stretchy and quick drying, Comici Women's Shorts are perfect for sustained climbing and active use in warm environments. Our Active fit ensures you won't be held back whether on a single pitch evening climb in the height of summer or carrying loads to a remote big wall.

EXOLITE

- EXOLITE 125 stretch double weave softshell fabric with FC free DWR
- Active fit
- 2 zipped hand pockets
- Zipped thigh pocket
- Integrated low-profile belt with press-stud waist closure
- Inseam measurement 27cm / 11in [size 12]

Sizes: 8 to 16

Weight: 170g / 6oz (approx.)

Fabric: 125g / 3.7oz

Content: 87% Polyamide, 13% Elastane



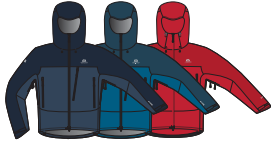
ME-01318 Ombre Blue

Shell



Matt Glenn
South Ridge Diablon des Darnes
Zinal, Switzerland

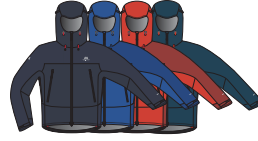
MEN'S



Makalu Men's Jacket



Makalu Men's Pant



Saltoro Men's Jacket



Saltoro Men's Pant



Katam Men's Jacket
NEW



Zeno Men's Jacket
NEW COLOR



Zeno FZ Men's Pant

WOMEN'S



Makalu Women's Jacket



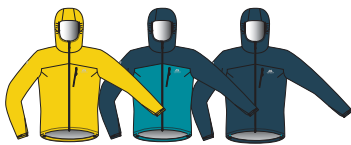
Makalu Women's Pant



Saltoro Women's Jacket



Saltoro Women's Pant



Katam Women's Jacket
NEW



Zeno Women's Jacket
NEW COLOR



Zeno FZ Women's Pant

TECHNICAL TOPS & TEES

LEGWEAR

MID LAYER

SOFT SHELL

SHELL

ACCESSORIES

INFORMATION



ME-006911

MAKALU MEN'S JACKET

A highly protective GORE-TEX jacket for hiking and mountaineering with a lighter environmental footprint.



The Makalu is a versatile waterproof mountain shell with bluesign® approved GORE-TEX 75D fabric throughout and an FC free DWR that ensures reliable performance with less environmental impact. It's the ideal balance of waterproof protection, durability and weight for year round use.



- New GORE-TEX with ePE membrane and FC free DWR
- 3-Layer construction with 75D face fabric for durability
- Mountain HC Hood is fully adjustable
- Alpine fit with articulated and pre-shaped sleeves
- 2 large pockets with YKK® WR zips
- Napoleon chest pocket with YKK® WR zip
- 2-way YKK® moulded Aquaguard® centre front zip
- 2-way YKK® WR underarm pit zips
- Adjustable laminated cuffs and dual tether hem drawcords
- Laminated and laser cut inner pocket with YKK® zip

Sizes: S - XXL

Weight: 550g / 1 lbs 3.4 oz (approx.)

Fabric: 75D - 251g / 7.4oz

Content: 100% Recycled Polyamide shell, ePE membrane



ME-01746
Dusk/Cosmos

ME-01680
Mykonos Blue/
Majolica Blue

ME-01027
Imperial Red/
Crimson



ME-007125

MAKALU MEN'S PANT

Protective and durable GORE-TEX legwear for year round hiking and mountaineering.



Makalu Pants use a bluesign® approved GORE-TEX 75D fabric throughout and an FC free DWR that ensures reliable performance with less environmental impact. 3/4 length 2-way side zips allow for easy layering as well as added ventilation when required.



- New GORE-TEX with ePE membrane and FC free DWR
- 3-Layer construction with 75D face fabric for durability
- Active fit with articulated knees
- Gusseted crotch for unrestricted movement
- Integrated elasticated waistband with drawcord
- 2-way ¾ length YKK® WR side zips with internal flap
- Adjustable hem

Sizes: S - XXL

Leg Length: Short, Regular & Long

Weight: 360g / 12.7 oz (approx.)

Fabric: 75D - 251g / 7.4oz

Content: 100% Recycled Polyamide shell, ePE membrane



ME-01004
Black

TECHNICAL TOPS & TEES

LEGWEAR

MID LAYER

SOFT SHELL

SHELL

ACCESSORIES

INFORMATION



ME-003864

SALTORO MEN'S JACKET

A lightweight and protective waterproof shell with hybrid GORE-TEX construction for trekking and backpacking in the mountains.



GORE-TEX 75D and GORE-TEX PACLITE® fabric are combined to give a lightweight, comfortable shell that retains the durability required for regular use with a pack. Our Alpine fit is completely unrestrictive for all day use and the proven Mountain HC Hood is a reliable refuge in the worst weather.



- ◇ 2.5-layer GORE-TEX PACLITE® 40D fabric with PFCec free DWR
- ◇ 3-layer GORE-TEX 75D fabric reinforcements with PFCec free DWR
- Mountain HC Hood is fully adjustable
- Alpine fit with articulated and pre-shaped sleeves
- 2-way YKK® moulded Aquaguard® centre front zip with internal flap
- 2 large pockets with YKK® WR zips
- YKK® WR underarm venting zips
- Adjustable laminated cuffs and dual tether hem drawcords

Sizes: S - XXL

Weight: 430g / 15.2oz (approx.)

Fabric: Main: 40D - 105g / 3.1oz

Reinforcement: 75D - 176g / 5.2oz

Content: 100% Polyester, ePTFE membrane



ME-01510

Blue Nights/
Cosmos

ME-01511

Lapis Blue/
Dark Ocean

ME-01540

Magma/
Bracken



ME-01635

Majolica Blue



ME-003882

SALTORO MEN'S PANT

Lightweight, protective and well-fitting waterproof trousers with hybrid GORE-TEX construction for trekking and backpacking.



GORE-TEX 75D and GORE-TEX PACLITE® fabric are combined to balance comfort and protection against a small pack size for mixed weather days high in the mountains. Our trim Active fit ensures there's no excess fabric to catch the wind on exposed ridgelines and ¾ length zips allow quick changes with boots on.



- ◇ 2.5-layer GORE-TEX PACLITE® 40D fabric with PFCec free DWR
- ◇ 3-layer GORE-TEX 75D fabric reinforcements with PFCec free DWR
- Active fit with articulated knees
- Gusseted crotch for unrestricted movement
- Integrated elasticated waistband with drawcord
- 2-way ¾ length YKK® WR side zips with internal flap
- Adjustable hem

Sizes: S - XXL

Leg Length: Short, Regular & Long

Weight: 310g / 10.9oz (approx.)

Fabric: Main: 40D - 105g / 3.1oz

Reinforcement: 75D - 176g / 5.2oz

Content: 100% Polyester, ePTFE membrane



ME-01004

Black

NEW



ME-007155

KATAM MEN'S JACKET

A highly breathable lightweight waterproof shell for mountain running and ultralight backpacking.



Combining incredibly breathable DRILITE® waterproof fabric with our streamlined Active fit and intricate Mountain Hood, the Katam is comfortable and protective enough to be worn all day, but packs away small when the weather improves. A single chest pocket gives quick access to essentials while on the move.



- Recycled 2.5-layer DRILITE® 50D fabric with FC free DWR
- Elasticated Mountain Hood with small peak and rear adjuster
- Active fit with articulated and pre-shaped sleeves
- YKK® WR centre front zip
- Napoleon chest pocket with YKK® WR Zip
- Adjustable cuffs and hem drawcords
- Rollaway hood

Sizes: S to XXL

Weight: 200g / 7.1oz (approx.)

Fabric: 20D - 72g / 2.1oz

Content: 100% Recycled Polyamide, PU membrane



ME-01867 Lemon

ME-01751 Dusk

NEW COLOR



ME-006630

ZENO MEN'S JACKET

Serious protection from the elements in a benchmark super-light and packable waterproof design.



Our recycled 2.5 layer DRILITE® fabric gives the reliable waterproof and breathable protection needed for the days when you don't manage to outrun the afternoon storm. Impressively lightweight but still featuring our proven Alpine Fit and Mountain Hood.



- Recycled 2.5-layer DRILITE® 50D fabric with FC free DWR
- Mountain Hood is fully adjustable
- Alpine fit with articulated and pre-shaped sleeves
- YKK® centre front zip with laminated outer flap and internal flap
- 2 large ventilated pockets with YKK® WR zips
- YKK® underarm pit zips with internal flap
- Adjustable cuffs and dual tether hem drawcords
- Packs into hand pocket with twin karabiner carry loops

Sizes: S to XXL

Weight: 320g / 11.3oz (approx.)

Fabric: 50D - 92g / 2.7oz

Content: 100% Recycled Polyamide, PU membrane



ME-01847 Fern/
Pine

ME-01746 Dusk/
Cosmos

ME-01680
Mykonos/Majolica



ME-006655

ZENO FZ MEN'S PANT

Lightweight and well fitting waterproof trousers for trekking in remote locations.



With our Active fit and articulated knees these are shell pants that won't hold you back. Our 2.5 layer DRILITE® 50D fabric gives reassuring waterproof performance combined with low pack size and full length zips that make for easy access over boots as the storm rolls in.



- Recycled 2.5-layer DRILITE® 50D fabric with FC free DWR
- Active fit with articulated knees
- Gusseted crotch for unrestricted movement
- Integrated elasticated waistband with drawcord
- Full length 2-way YKK® side zips with internal and external flaps
- Adjustable hem

Sizes: S to XXL

Leg Length: Short, Regular & Long

Weight: 230g / 8.1oz (approx.)

Fabric: 50D - 92g / 2.7oz

Content: 100% Recycled Polyamide, PU membrane



ME-01004 Black

TECHNICAL TOPS & TEES

LEGWEAR

MID LAYER

SOFT SHELL

SHELL

ACCESSORIES

INFORMATION



Hazel Robertson
Cairngorms
Scotland



ME-006914

MAKALU WOMEN'S JACKET

A highly protective GORE-TEX jacket for hiking and mountaineering with a lighter environmental footprint.



The Makalu is a versatile waterproof mountain shell with bluesign® approved GORE-TEX 75D fabric throughout and an FC free DWR that ensures reliable performance with less environmental impact. It's the ideal balance of waterproof protection, durability and weight for year round use.



- New GORE-TEX with ePE membrane and FC free DWR
- 3-Layer construction with 75D face fabric for durability
- Mountain HC Hood is fully adjustable
- Alpine fit with articulated and pre-shaped sleeves
- 2 large pockets with YKK® WR zips
- Napoleon chest pocket with YKK® WR zip
- 2-way YKK® moulded Aquaguard® centre front zip
- 2-way YKK® WR underarm pit zips
- Adjustable laminated cuffs and dual tether hem drawcords
- Laminated and laser cut inner pocket with YKK® zip

Sizes: 8-16

Weight: 480g / 1 lbs 0.9 oz (approx.)

Fabric: 75D - 251g / 7.4oz

Content: 100% Recycled Polyamide shell, ePE membrane



ME-01853

Amethyst /
Medieval Blue

ME-01850

Stellar/
Majolica Blue

ME-01720

Majolica Blue /
Capsicum Red



ME-007126

MAKALU WOMEN'S PANT

Protective and durable GORE-TEX legwear for year round hiking and mountaineering.



Makalu Pants use a bluesign® approved GORE-TEX 75D fabric throughout and an FC free DWR that ensures reliable performance with less environmental impact. 3/4 length 2-way side zips allow for easy layering as well as added ventilation when required.



- New GORE-TEX with ePE membrane and FC free DWR
- 3-Layer construction with 75D face fabric for durability
- Active fit with articulated knees
- Gusseted crotch for unrestricted movement
- Integrated elasticated waistband with drawcord
- 2-way ¾ length YKK® WR side zips with internal flap
- Adjustable hem

Sizes: 8-16

Leg Length: Short & Regular

Weight: 340g / 12 oz (approx.)

Fabric: 75D - 251g / 7.4oz

Content: 100% Recycled Polyamide shell, ePE membrane



ME-01004

Black

TECHNICAL TOPS & TEES

LEGWEAR

MID LAYER

SOFT SHELL

SHELL

ACCESSORIES

INFORMATION



ME-003866

SALTORO WOMEN'S JACKET

A lightweight and protective waterproof shell with hybrid GORE-TEX construction for trekking and backpacking in the mountains.



GORE-TEX 75D and GORE-TEX PACLITE® fabric are combined to give a lightweight, comfortable shell that retains the durability required for regular use with a pack. Our Women's Alpine fit is completely unrestrictive for all day use and the proven Mountain HC Hood is a reliable refuge in the worst weather.



- 3-layer GORE-TEX 75D fabric
- 2.5-layer GORE-TEX PACLITE® fabric
- Mountain HC Hood is fully adjustable
- Women's Alpine fit with articulated and pre-shaped sleeves
- 2-way YKK® moulded Aquaguard® centre front zip with internal flap
- 2 large pockets with YKK® WR zips
- YKK® WR underarm venting zips
- Adjustable laminated cuffs and dual tether hem drawcords

Sizes: 8 - 20

Weight: 380g / 13.4oz (approx.)

Fabric: 40D / 75D - 107g / 176g - 3.2oz / 5.2oz

Content: 100% Polyester, ePTFE membrane



ME-01850

Stellar Blue/
Majolica Blue

ME-01559

Capsicum Red

ME-01591

Spruce/
Deep Teal



ME-004462

SALTORO WOMEN'S PANT

Lightweight, protective and well-fitting waterproof trousers with hybrid GORE-TEX construction for trekking and backpacking.



GORE-TEX 75D and GORE-TEX PACLITE® fabric are combined to balance comfort and protection against a small pack size for mixed weather days high in the mountains. Our trim Active fit ensures there's no excess fabric to catch the wind on exposed ridgelines and ¾ length zips allow quick changes with boots on.



- 2.5-layer GORE-TEX PACLITE® fabric
- 3-layer GORE-TEX 75D fabric reinforcements
- Women's Active fit with articulated knees
- Gusseted crotch for unrestricted movement
- Integrated elasticated waistband with drawcord
- 2-way ¾ length YKK® WR side zips with internal flap
- Adjustable hem

Sizes: 8 - 16

Leg Length: Short & Regular

Weight: 300g / 10.6oz (approx.)

Fabric: 40D / 75D - 107g / 176g - 3.2oz / 5.2oz

Content: 100% Polyester, ePTFE membrane



ME-01004

Black

NEW



ME-007149

KATAM WOMEN'S JACKET

A highly breathable lightweight waterproof shell for mountain running and ultralight backpacking.



Combining incredibly breathable DRILITE® waterproof fabric with our streamlined Active fit and intricate Mountain Hood, the Katam is comfortable and protective enough to be worn all day, but packs away small when the weather improves. A single chest pocket gives quick access to essentials while on the move.



- Recycled 2.5-layer DRILITE® 50D fabric with FC free DWR
- Elasticated Mountain Hood with small peak and rear adjuster
- Active fit with articulated and pre-shaped sleeves
- YKK® WR centre front zip
- Napoleon chest pocket with YKK® WR Zip
- Adjustable cuffs and hem drawcords
- Rollaway hood

Sizes: 8 to 16

Weight: 180g / 6.3oz (approx.)

Fabric: 20D - 72g / 2.1oz

Content: 100% Recycled Polyamide, PU membrane



ME-01867 Lemon

ME-01845 Topaz/
Majolica

ME-01635 Majolica
Blue

NEW COLOR



ME-006645

ZENO WOMEN'S JACKET

Serious protection from the elements in a benchmark super-light and packable waterproof design.



Our recycled 2.5 layer DRILITE® fabric gives the reliable waterproof and breathable protection needed for the days when you don't manage to outrun the afternoon storm. Impressively lightweight but still featuring our proven Women's Alpine Fit and Mountain Hood.



- Recycled 2.5-layer DRILITE® 50D fabric with FC free DWR
- Mountain Hood is fully adjustable
- Alpine fit with articulated and pre-shaped sleeves
- YKK® centre front zip with laminated outer flap and internal flap
- 2 large ventilated pockets with YKK® WR zips
- YKK® underarm pit zips with internal flap
- Adjustable cuffs and dual tether hem drawcords
- Packs into hand pocket with twin karabiner carry loops

Sizes: 8 to 16

Weight: 270g / 9.5oz (approx.)

Fabric: 50D - 92g / 2.7oz

Content: 100% Recycled Polyamide, PU membrane



ME-01850 Stellar/
Majolica

ME-01610
DeepTeal/Cosmos

ME-01753
Capsicum/
TibetanRed



ME-006657

ZENO FZ WOMEN'S PANT

Lightweight and well fitting waterproof trousers for trekking in remote locations.



With our Women's Active fit and articulated knees these are shell pants that won't hold you back. Our 2.5 layer DRILITE® 50D fabric gives reassuring waterproof performance combined with low pack size and full length zips that make for easy access over boots as the storm rolls in.



- Recycled 2.5-layer DRILITE® 50D fabric with FC free DWR
- Active fit with articulated knees
- Gusseted crotch for unrestricted movement
- Integrated elasticated waistband with drawcord
- Full length 2-way YKK® side zips with internal and external flaps
- Adjustable hem

Sizes: 8 to 16

Leg Length: Short & Regular

Weight: 230g / 8.1oz (approx.)

Fabric: 50D - 92g / 2.7oz

Content: 100% Recycled Polyamide, PU membrane



ME-01004 Black

TECHNICAL TOPS & TEES

LEGWEAR

MID LAYER

SOFT SHELL

SHELL

ACCESSORIES

INFORMATION

Accessories

Amelie Kühne
Säukaritz, Grossglockner
Austria

HEADWEAR



Yosemite Cap
NEW COLOR



Roundel Cap
NEW COLOR



Alpine Cap
NEW



El Cap
NEW



Aerofoil Cap
NEW



Squal Cap
NEW COLOR

GLOVES



G2 Alpine Glove



G2 Alpine Wmns Glove



Touch Screen Glove



Touch Screen Wmns Glove

NEW COLOUR

ME-001649

YOSEMITE CAP

Trucker style cap using robust softshell fabric.

ME-01899 Admiral Blue NEW

EXOLITE

- EXOLITE 125 stretch double weave softshell fabric at front with FC free DWR
- Mesh back panels
- Moulded plastic rear adjustment
- Exclusive Mountain Equipment graphic

Content: 87% Polyamide, 13% Elastane

ME-01866 Pine NEWME-01829 Burnt Henna NEW

ME-01318 Ombre Blue



ME-01004 Black

Sizes:
O/SWeight:
70g / 2.5oz
(approx.)

NEW COLOUR

ME-006539

ROUNDEL CAP

Trucker style cap using robust softshell fabric.

ME-01899 Admiral Blue NEW

EXOLITE

- EXOLITE 125 stretch double weave softshell fabric at front with FC free DWR
- Mesh rear panels
- Moulded plastic rear adjustment
- Exclusive Mountain Equipment graphic

Content: 87% Polyamide, 13% Elastane

ME-01866 Pine NEWME-01829 Burnt Henna NEW

ME-01318 Ombre Blue



ME-01004 Black

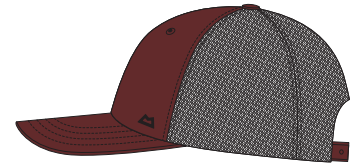
Sizes:
O/SWeight:
70g / 2.5oz
(approx.)

NEW

ME-007360

ALPINE CAP

An Organic cotton cap with embroidered logo.



ME-01684 Fired Brick

- Stretch Organic cotton blend front panel
- Recycled mesh rear panels
- Moulded plastic rear adjustment

Content: Front: 63% Organic Cotton, 33% Polyamide, 4% Elastane; Mesh: 100% Recycled Polyester



ME-01743 Red Rock



ME-01324 Pumpkin Spice



ME-01807 Fern



ME-01904 Indian Teal

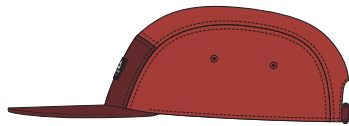
Sizes:
O/SWeight:
70g / 2.5oz
(approx.)

NEW

ME-007179

EL CAP

An Organic Cotton cap for hanging out everywhere from its namesake cliff to local boulders.



ME-01761 Fired Brick/Red Rock

- Stretch Organic cotton blend fabric
- Rear adjustment
- Exclusive Mountain Equipment print on Fern and Pumpkin Spice

Content: 63% Organic Cotton, 33% Polyamide, 4% Elastane



ME-01324 Pumpkin Spice



ME-01807 Fern



ME-01906 Maj/Indian Teal



ME-01946 Harlequin

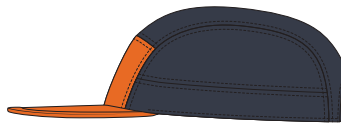
Sizes:
O/SWeight:
80g / 2.8oz
(approx.)

NEW

ME-006809

AEROFOIL CAP

An exceptionally light and breathable softshell cap.



ME-01947 Ember/Blue Nights

EXOLITE

- EXOLITE 45 stretch double weave softshell fabric
- Light weight rollable peak
- Rear adjustment

Content: 100% Polyamide



ME-01415 Magma



ME-01790 Sage



ME-01948 Capsicum/Blue Nights



ME-01403 Blue Nights

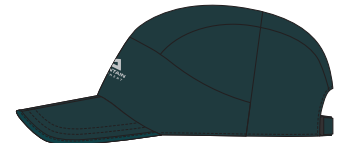
Sizes:
O/SWeight:
30g / 1.1oz
(approx.)

NEW COLOUR

ME-001596

SQUALL CAP

Super lightweight and highly breathable softshell cap.



EXOLITE

- EXOLITE 125 stretch double weave softshell fabric with FC free DWR
- Mesh lined inner front panel
- Folding peak for minimal pack size
- Rear adjustment

Content: 87% Polyamide, 13% Elastane

ME-01866 Pine NEWME-01899 Admiral Blue NEW

ME-01318 Ombre Blue

Sizes:
O/SWeight:
60g / 2.1oz
(approx.)



ME-006402

G2 ALPINE GLOVE

A lightweight supremely dextrous softshell glove for ski-touring and mountaineering.



The surgical-glove precision of the G2 is welcome whether adjusting boot buckles or placing crucial climbing protection. The goatskin leather palm and softshell outer combine durability, windproofness and comfort, while the tricot lining means they provide vital warmth.



- WINDSTOPPER® stretch softshell fabric is durably weather resistant with PFCec free DWR
- Water resistant Goatskin leather palm
- Mountain fit with pre-curved fingers and thumb
- Brushed tricot lining for comfort and warmth
- Darted fingers
- Adjustable wrist closure

Sizes: S to XXL

Weight: 100g / 3.5oz (approx.)

Fabric: 290g / 8.6oz

Content: Outer: 85% polyamide, 15% elastane, ePTFE membrane; palm: 100% leather; lining 100% polyester



ME-01025 Black/Shadow



ME-006474

G2 ALPINE WOMENS GLOVE

A lightweight supremely dextrous softshell glove for ski-touring and mountaineering.



The surgical-glove precision of the G2 is welcome whether adjusting boot buckles or placing crucial climbing protection. The goatskin leather palm and softshell outer combine durability, windproofness and comfort, while the tricot lining means they provide vital warmth.



- WINDSTOPPER® stretch softshell fabric is durably weather resistant with PFCec free DWR
- Water resistant Goatskin leather palm
- Women's Mountain fit with pre-curved fingers and thumb
- Brushed tricot lining for comfort and warmth
- Darted fingers
- Adjustable wrist closure

Sizes: XS to L

Weight: 80g / 2.8oz (approx.)

Fabric: 290g / 8.6oz

Content: Outer: 85% polyamide, 15% elastane, ePTFE membrane; palm: 100% leather; lining 100% polyester



ME-01025 Black/Shadow



ME-000925

TOUCH SCREEN GLOVE

With touch-screen compatible finger and thumb, this soft and stretchy glove is a winter essential



ME-01004 Black

Light, warm and fast drying these stretchy fleece gloves should always be in your pack. Providing a surprising amount of insulation for a thin glove they'll be the first thing you reach for as the temperature starts to drop. A touch screen compatible index finger and thumb allow the use of a phone or GPS.



- POLARTEC® Power Stretch® Pro™ fleece for warmth and weather resistance
- Touch Screen compatible index finger and thumb
- Extended double layered cuff
- Box finger construction for comfort and precise fit

Sizes: S to XXL

Weight: 60g / 2.1oz (approx.)

Fabric: 241g / 7.1oz

Content: 56% Polyester, 34% Polyamide, 10% Elastane



ME-000926

TOUCH SCREEN WOMENS GLOVE



ME-01004 Black

Sizes: XS to L

Weight: 50g / 1.8oz (approx.)

Fabric: 241g / 7.1oz

Content: 56% Polyester, 34% Polyamide, 10% Elastane

TECHNICAL TOPS & TEES

LEGWEAR

MID LAYER

SOFT SHELL

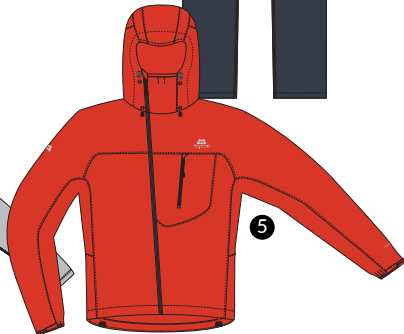
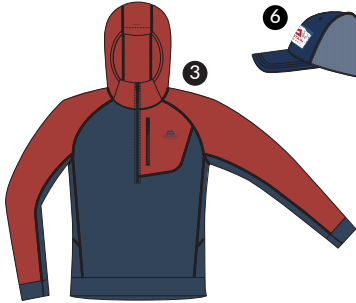
SHELL

ACCESSORIES

INFORMATION

Rock Climbing

- ① Headpoint Alpinism Tee
- ② Glace Hooded Top
- ③ Aiguille Hooded Top
- ④ Inception Pant
- ⑤ Squall Hooded Jacket
- ⑥ Yosemite Cap



Mountain Running

- ① Nava SS Zip T
- ② Aerotherm Vest
- ③ Dynamo Twin Short
- ④ Aerofoil Jacket
- ⑤ Aerofoil Cap
- # *PR Style



Hiking

- ① Groundup Skyline Tee
- ② Aerotherm Jacket
- ③ Comici Pant
- ④ Approach Short
- ⑤ Katam Jacket
- ⑥ Squall Cap
- # *PR Style



Mountaineering

- ① Lumiko Zip T
- ② Arrow Hooded Jacket
- ③ Ibex Pant
- ④ Makalu Jacket



Rock Climbing

- 1 Groundup Stripe Tee
- 2 Glace Hooded Top
- 3 Aiguille Hooded Top
- 4 Anvil Pant
- 5 Squall Hooded Jacket
- 6 Alpine Cap



Mountain Running

- 1 Nava Tank
- 2 Aerotherm Vest
- 3 Dynamo Twin Short
- 4 Aerofoil Jacket
- 5 Aerofoil Cap
- # *PR Style



Hiking

- 1 Nava SS Zip T
- 2 Endika Jacket
- 3 n/a
- 4 Comici Short
- 5 Katam Jacket
- 6 Squall Cap
- # *PR Style



Mountaineering

- 1 Redline LS Tee
- 2 Eclipse Hooded Jacket
- 3 Particle Jacket
- 4 Chamois Pant
- 5 Makalu Jacket



Sizing

Men's Clothing Size Chart

UK		XXS	XS	S	M	L	XL	XXL	XXXL
EU		44	46	48	50	52	54	56	58
US		XXS	XS	S	M	L	XL	XXL	XXXL
Chest	Inches	31-34	34-36	36-39	39-41	41-43	43-46	46-48	48-50
	CM	80-86	86-92	92-98	98-104	104-110	110-116	116-122	122-128
Waist	Inches	26	28	30	32	34	36	38	40
	CM	64-69	69-74	74-79	79-84	84-89	89-94	94-99	99-104
Inside Leg	Available in 29in/73.5cm (short), 31in/79.5cm (regular) & 33in/84.5cm (long)								

Women's Clothing Size Chart

UK		8	10	12	14	16	18	20	
EU		34-36	36-38	38-40	40-42	42-44	44-46	46-48	
US		XS (4)	S (6)	M (8)	L (10)	XL (12)	XXL (14)	XXXL (16)	
Chest	Inches	32-34	34-36	36-38	38-40	40-42	42-44	44-46	
	CM	82-87	87-92	92-97	97-102	102-107	107-112	112-117	
Waist	Inches	25-27	27-29	29-31	31-33	33-35	35-37	37-39	
	CM	64-69	69-74	74-79	79-84	84-89	89-94	94-99	
Hip	Inches	35-37	37-39	39-41	41-43	43-45	45-47	47-49	
	CM	88-93	93-98	98-103	103-108	108-113	113-118	118-123	
Inside Leg	Available in 29in/73.5cm (short), 31in/79.5cm (regular) & 33in/84.5cm (long)								

Gloves Size Chart

SIZE		S	S	M	L	XL	XXL
Men's	Inches	7-7.75	7.75-8.25	8.25-8.75	8.75-9.25	9.25-10	10-10.75
	CM	18-19.5	19.5-21	21-22	22-23.5	23.5-25.5	25.5-27
Women's	Inches	6-7.00	7-7.25	7.25-7.75	7.75-8	-	-
	CM	16-17.5	17.5-18.5	18.5-19.5	19.5-20.5	-	-

Sales Agents

Rockies

Nick Patston

T. 1 (720) 934 8374

E. Nick@urbanoutdoorsales.com

Ferdinand "Ferd" Torres

T. 1 (720) 278 9197

E. Ferd@urbanoutdoorsales.com

Urban Outdoor Sales, LLC

Pacific Northwest

Rob Scott

T. 1 (503) 819 1379

E. momentumoutdoor@gmail.com

Momentum Outdoors Sales LLC

Mid-Atlantic

Andy Correll

T. 1 (607) 592 0670

E. andy.correll@gmail.com

Paul Wu

T. 1 (781) 820 2517

E. paul.w.wu@gmail.com

Dedication Sports

New England

Dana Seaton

T. 1 (401) 573 5650

E. dseaton@perspectiveoutdoor.com

Perspective Outdoor

North American Office

Outdoor & Sports Company, Inc.

T. 1 (905) 940 9511

E. sales@oscnainc.com

Sales & Marketing Office

Product Index

TECHNICAL TOPS & TEES

LEGWEAR

MID LAYER

SOFT SHELL

SHELL

ACCESSORIES

INFORMATION

TECHNICAL TOPS & TEES

ME-005996.....Nava Men's Crew	10
ME-005997.....Nava SS Men's Zip T	10
ME-005998.....Nava LS Men's Zip T	10
ME-006023.....Glance Hooded Men's Top	11
ME-007326.....Headpoint Alpinism Men's Tee.....	11
ME-006617.....Headpoint Men's Tee.....	11
ME-007390.....Groundup Men's Tee	12
ME-007325.....Groundup Skyline Men's Tee.....	12
ME-007392.....Redline LS Men's Tee.....	12
ME-007145.....Aiguille Hooded Men's Top.....	13
ME-007328.....Freedom Men's Tee.....	13
ME-007327.....Alpinism Men's Tee.....	13
ME-004770.....Roundel Men's Tee.....	14
ME-007142.....Nava Women's Tank	16
ME-006653.....Nava SS Women's Zip T.....	16
ME-006652.....Nava LS Women's Zip T.....	16
ME-005993.....Glance Hooded Women's Top.....	17
ME-006628.....Headpoint Women's Vest.....	17
ME-006730.....Headpoint Women's Tee	17
ME-007395.....Equinox Women's Vest	18
ME-007393.....Groundup Stripe Women's Tee.....	18
ME-007396.....Redline LS Women's Tee.....	18
ME-007144.....Aiguille Hooded Women's Top.....	19
ME-007143.....Freedom Women's Tee	19
ME-007332.....Alpinism Women's Tee	19

LEGWEAR

ME-007163.....Dynamo Men's Twin Short.....	22
ME-006155.....Masino Men's Short.....	22
ME-007363.....Anvil Men's Pant.....	23
ME-007365.....Anvil Men's Short	23
ME-002020.....Approach Men's Pant	24
ME-002022.....Approach Men's Short	24
ME-005983.....Inception Men's Pant.....	25
ME-004113.....Inception Men's Short.....	25
ME-005986.....Dynamo Women's Twin Short	28
ME-004640.....Dynamo Women's Skort.....	28
ME-007152.....Masino Women's Pant	29
ME-007153.....Masino Women's Short.....	29
ME-007206.....Anvil Women's Pant.....	30
ME-007333.....Anvil Women's Short.....	30
ME-007148.....Altun Women's Pant.....	31
ME-002024.....Approach Women's Short.....	31

MID LAYER

ME-005360.....Lumiko Men's Zip T	34
ME-005359.....Lumiko Hooded Men's Jacket.....	34
ME-006951.....Durian Hooded Men's Jacket	34
ME-006717.....Oracool Hooded Men's Jacket.....	35
ME-005727.....Eclipse Hooded Men's Zip T	35
ME-005722.....Eclipse Hooded Men's Jacket.....	35
ME-005369.....Lumiko Women's Zip T	36
ME-005368.....Lumiko Hooded Women's Jacket	36
ME-006929.....Durian Hooded Women's Jacket.....	36
ME-006720.....Endika Hooded Women's Jacket	37
ME-005761.....Eclipse Hooded Women's Jacket.....	37
ME-006334.....Particle Women's Jacket.....	37

SOFT SHELL

ME-004616.....Aerofoil Full zip Men's Jacket.....	40
ME-006529.....Arrow Hooded Men's Jacket	40
ME-007189.....Aerotherm Men's Vest.....	41
ME-006687.....Aerotherm Men's Jacket.....	41
ME-002928.....Squall Hooded Men's Jacket.....	41
ME-000850.....Ibex Mountain Men's Pant	42
ME-004643.....Ibex Mountain Men's Short.....	42
ME-004647.....Comici Men's Pant.....	43
ME-004666.....Comici Men's Short.....	43
ME-005593.....Arrow Women's Jacket.....	44
ME-006553.....Arrow Hooded Women's Jacket.....	44
ME-004680.....Aerofoil Full zip Women's Jacket	44
ME-007211.....Aerotherm Women's Vest.....	45
ME-006705.....Aerotherm Women's Jacket.....	45
ME-006819.....Squall Hooded Women's Jacket	45
ME-000851.....Chamois Women's Pant.....	46
ME-006707.....Comici Women's Pant.....	47
ME-006708.....Comici Women's Short	47

SHELL

ME-006911.....Makalu Men's Jacket.....	50
ME-007125.....Makalu Men's Pant.....	50
ME-003864.....Saltoro Men's Jacket	51
ME-003882.....Saltoro Men's Pant	51
ME-007155.....Katam Men's Jacket	52
ME-006630.....Zeno Men's Jacket.....	52
ME-006655.....Zeno FZ Men's Pant.....	52
ME-006914.....Makalu Women's Jacket	54
ME-007126.....Makalu Women's Pant	54
ME-003866.....Saltoro Women's Jacket.....	55
ME-004462.....Saltoro Women's Pant	55
ME-007149.....Katam Women's Jacket.....	56
ME-006645.....Zeno Women's Jacket	56
ME-006657.....Zeno FZ Women's Pant	56

ACCESSORIES

ME-001649.....Yosemite Cap.....	60
ME-006539.....Roundel Cap.....	60
ME-007360.....Alpine Cap.....	60
ME-007179.....El Cap	60
ME-006809.....Aerofoil Cap	60
ME-001596.....Squall Cap.....	60
ME-006402.....G2 Alpine Glove.....	61
ME-006474.....G2 Alpine Women's Glove.....	61
ME-000925.....Touch Screen Glove.....	61
ME-000926.....Touch Screen Women's Glove.....	61



Together with Fair Wear Foundation, Mountain Equipment are working to achieve fair working conditions in our chosen factories. Mountain Equipment has been a member of FWF since 2012 and has developed a close partnership, first achieving Leader status in 2016.

Mountain Equipment is committed to implementing the strict 8-point FWF Code of Labour Practices, which is based on UN and ILO principles. These include; the payment of living wages, reasonable working hours, safe and healthy working conditions and prevention of child labour.

We Support



Front Cover:

Callum Johnson
L'Enfer du Décor
Chamonix, France



MOUNTAIN
EQUIPMENT

Outdoor & Sports Company Inc.
104 Crockford Road, Unit 216, Scarborough, Ontario, M1R 3C3
T. 1 (905) 940 9511
E. sales@oscnainc.com | W. mountain-equipment.com

OSC, Inc. is a solely owned subsidiary of Outdoor & Sports Company Holding, Limited, UK.
Mountain Equipment is a brand of OSC Limited.
